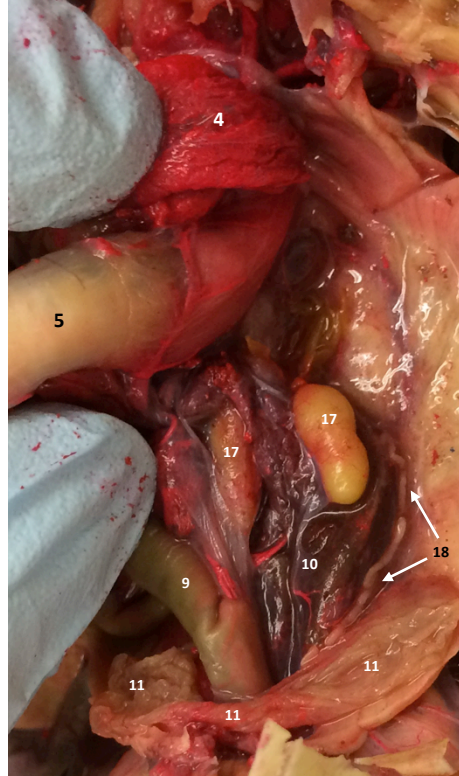
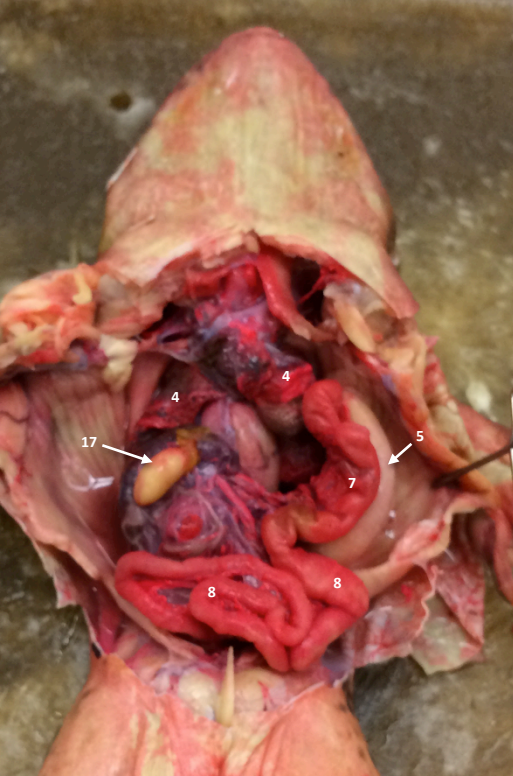


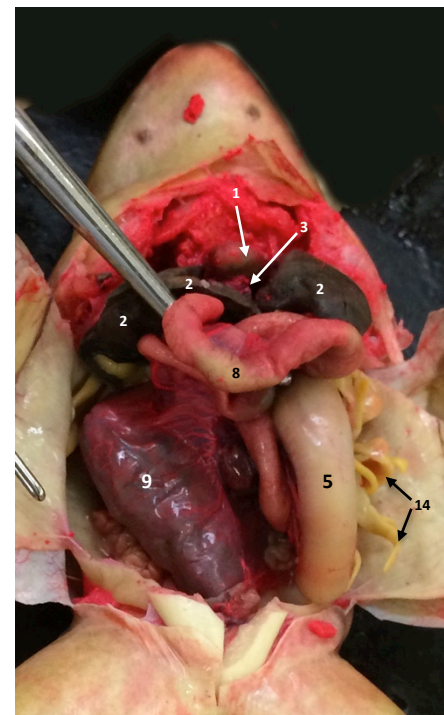
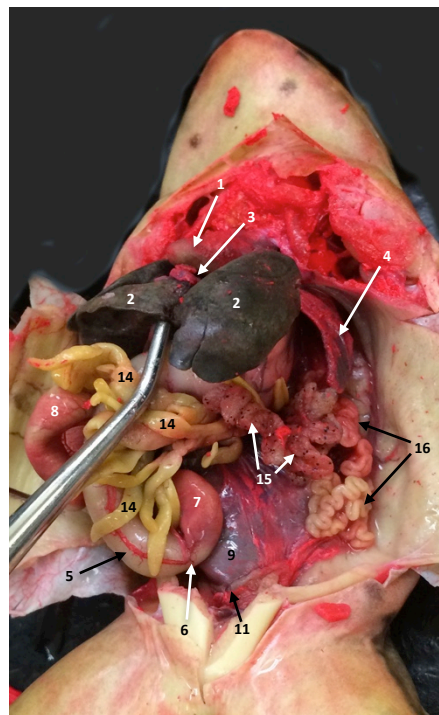
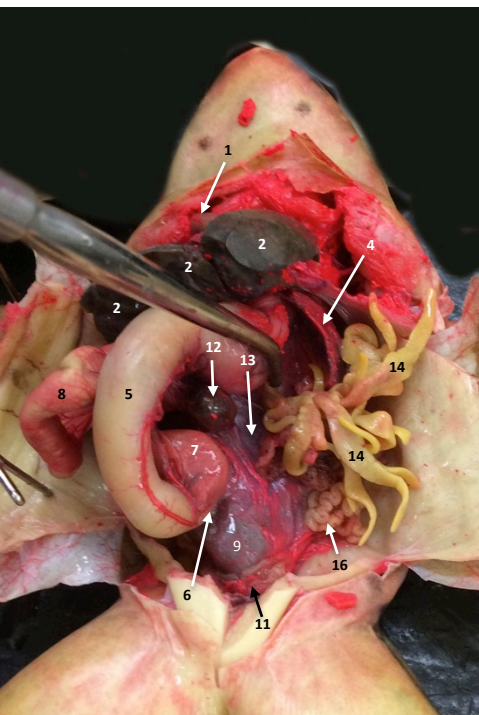
# Frog

## Family Ranidae

1. Heart (general)
2. Liver
3. Gall bladder
4. Lung
5. Stomach
6. Pylorus
7. Duodenum
8. Small intestine (general)
9. Large intestine
10. Kidney (covered in peritoneum)
11. Urinary bladder
12. Spleen
13. Mesentery
14. Fat bodies
15. Ovary (with eggs)
16. Oviduct
17. Testis
18. Vas deferens



**Male – post-hibernation**  
Fat bodies are minimal and not obvious.



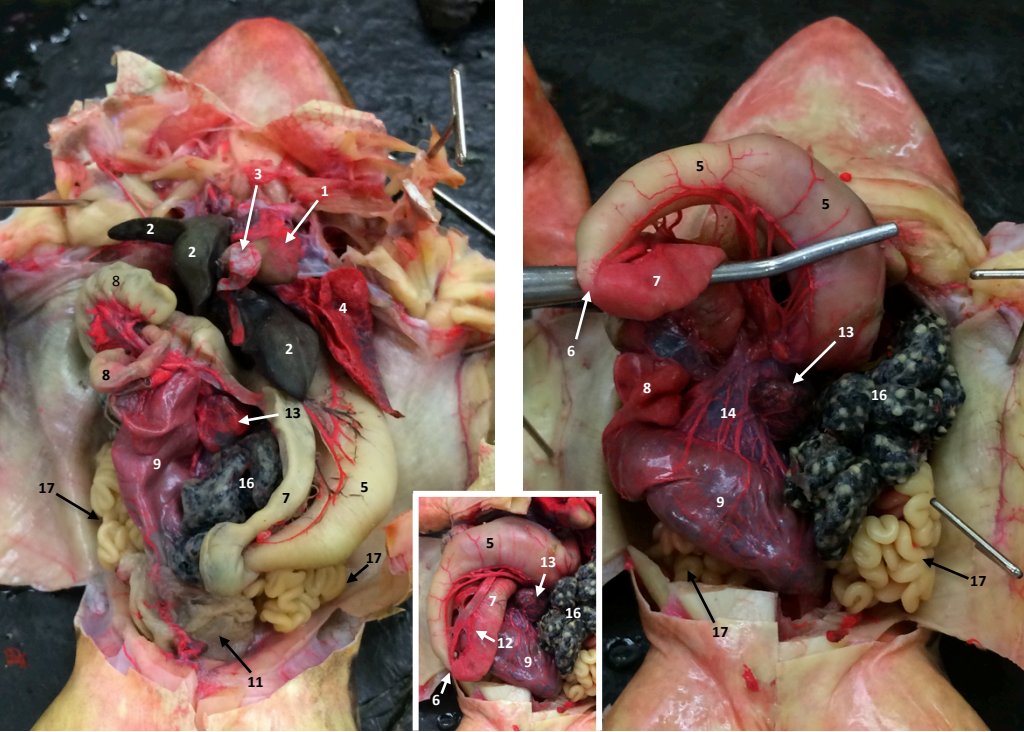
**Female – pre-hibernation**  
Fat bodies are enlarged and obvious. Ovaries are small with immature eggs.  
Large intestine is full.



# Frog

## Family Ranidae

1. Heart (general)
2. Liver
3. Gall bladder
4. Lung
5. Stomach
6. Pylorus
7. Duodenum
8. Small intestine (general)
9. Large intestine
10. Kidney (covered in peritoneum)
11. Urinary bladder
12. Pancreas
13. Spleen
14. Mesentery
15. Fat bodies
16. Ovary (with eggs)
17. Oviduct

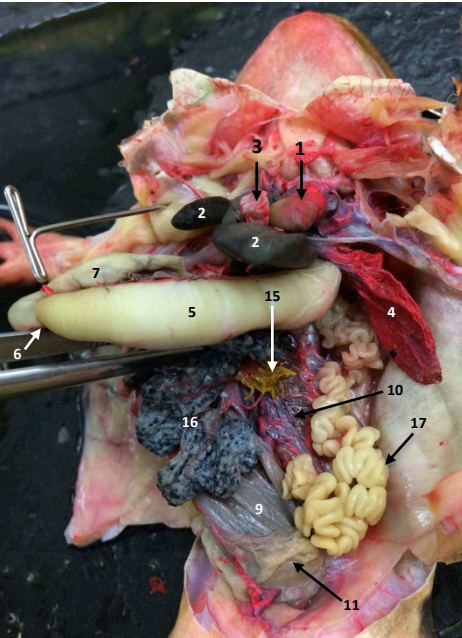


### Female – post-hibernation, start of breeding

Fat bodies are small.

The ovaries are enlarged, and eggs are maturing.

Large intestine is full.

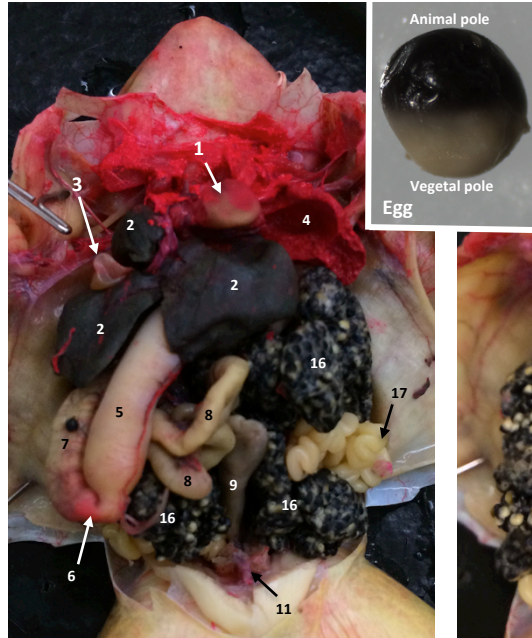


### Female – post-hibernation, start of breeding

Fat bodies are small.

The ovaries are enlarged, and eggs are maturing.

Large intestine is full.



### Female – mature, breeding

Fat bodies are small.

The ovaries and eggs fill most of the abdominal cavity.

Large intestine is not full.

