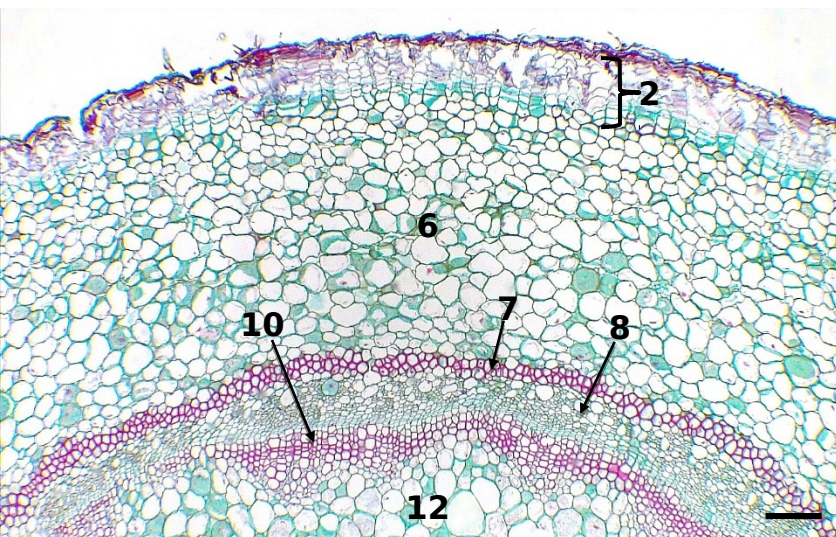
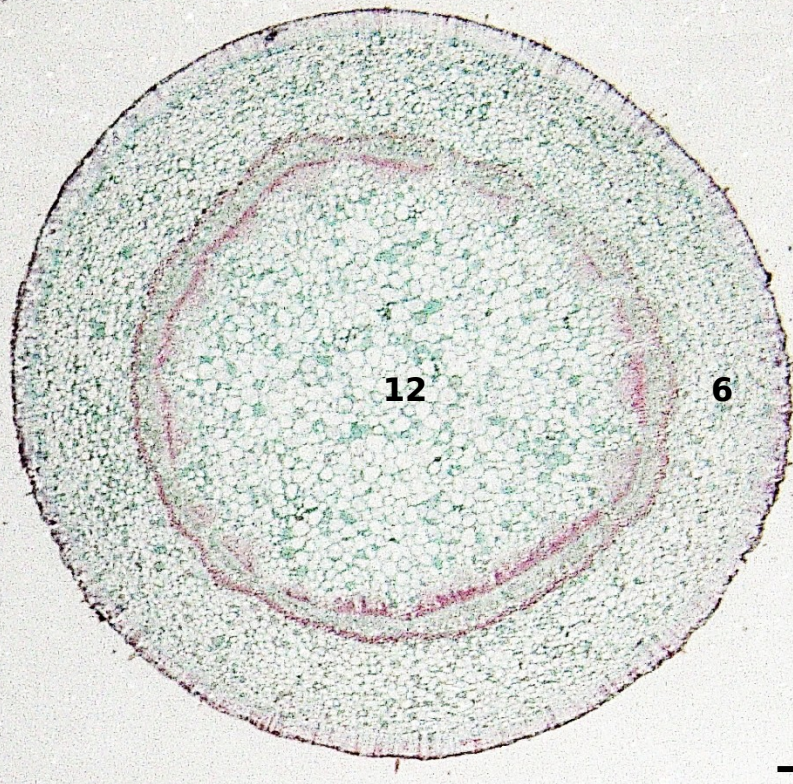


Dicot Stem

Pelargonium (Geranium)

Older

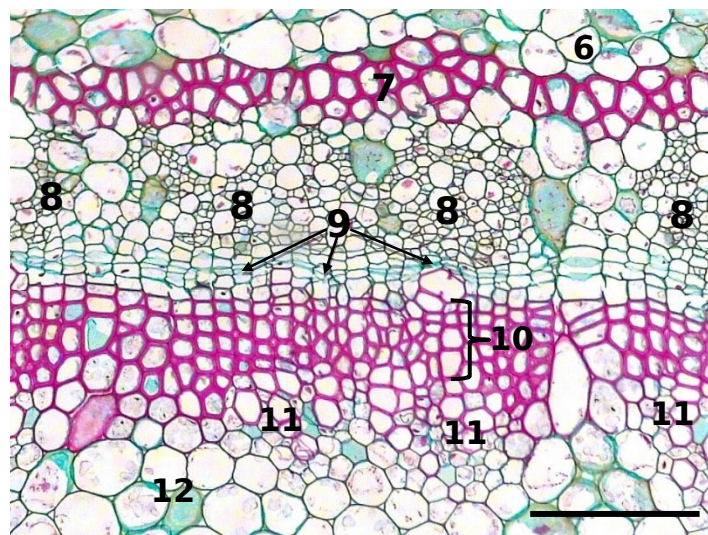
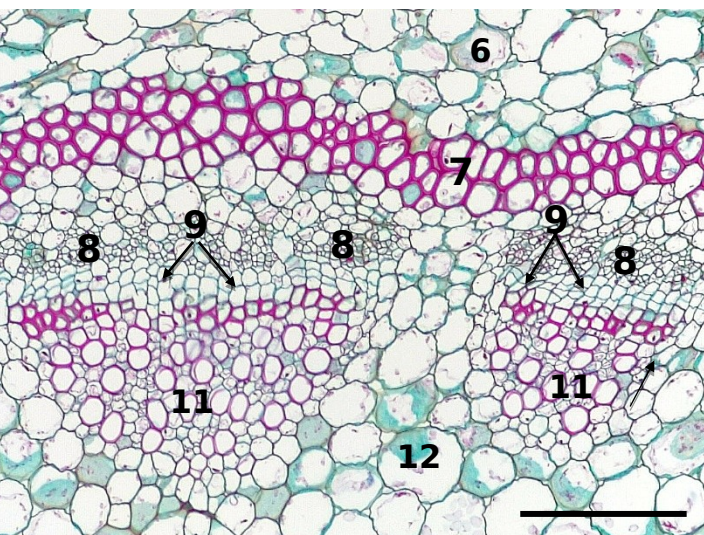
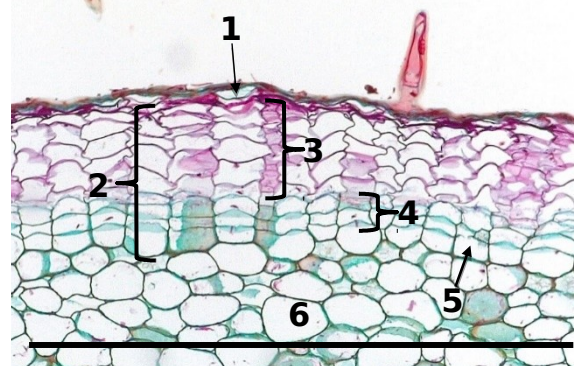
1. Epidermis
2. Periderm
3. Cork (phellem)
4. Cork cambium (phellogen)
5. Phelloderm
6. Cortex
7. Primary phloem fiber
8. Primary phloem
9. Vascular cambium
10. Secondary xylem
11. Primary xylem
12. Pith



Transverse sections

Bar = 200 μ m

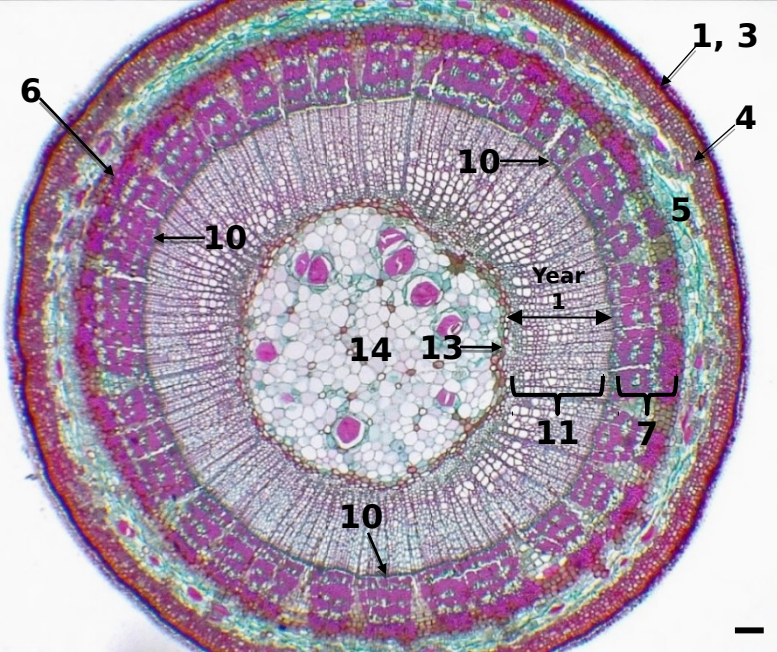
CC BY SA on Lai and Carol Wenzel, 2020



Dicot Stem

Tilia (Basswood)

Year 1

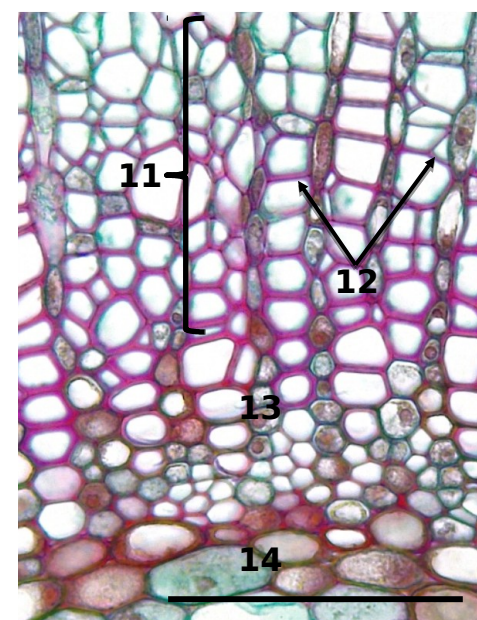
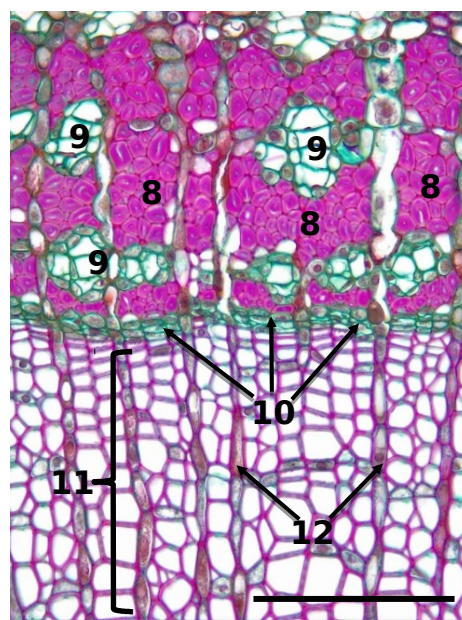
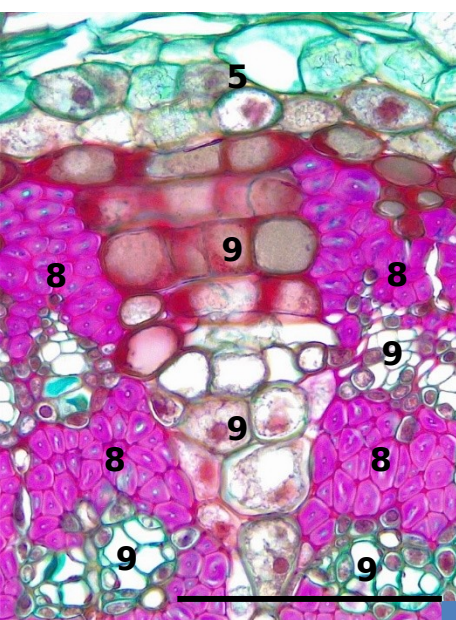
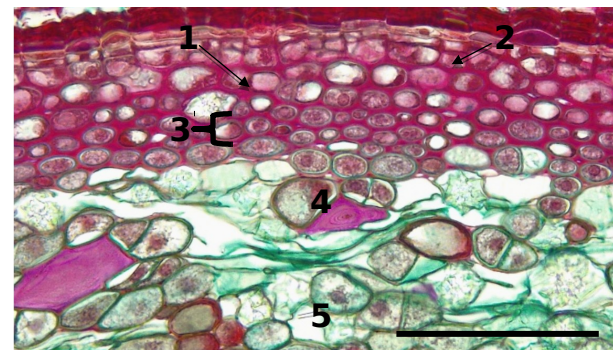
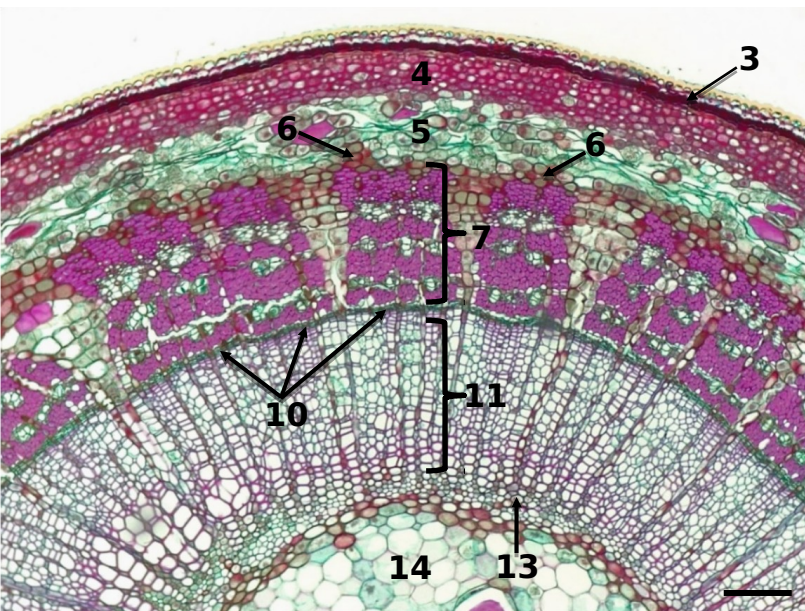


1. Epidermis
2. Cuticle
3. Periderm
4. Outer cortex
5. Inner cortex
6. Primary phloem region
7. Secondary phloem
8. Secondary phloem fiber
9. Secondary phloem parenchyma
10. Vascular cambium
11. Secondary xylem
12. Rays
13. Primary xylem
14. Pith

Transverse sections

Bar = 100 μ m

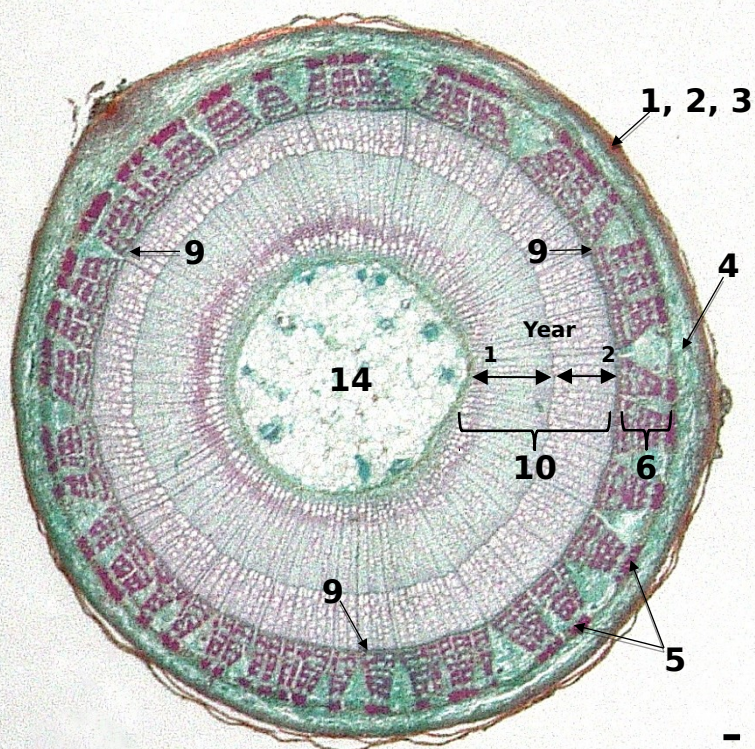
CC BY SA on Lai and Carol Wenzel, 2020



Dicot Stem

Tilia (Basswood)

Year 2

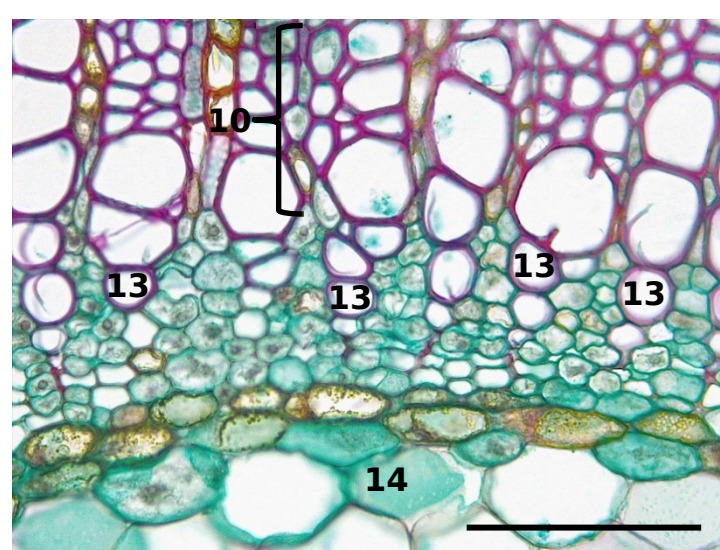
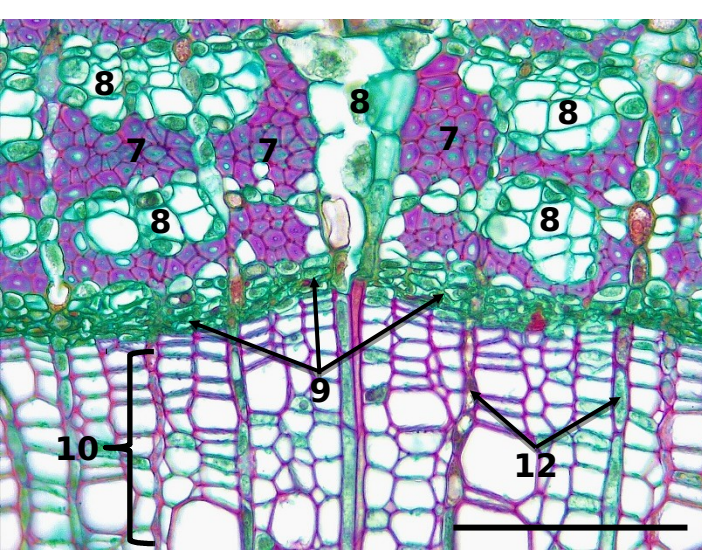
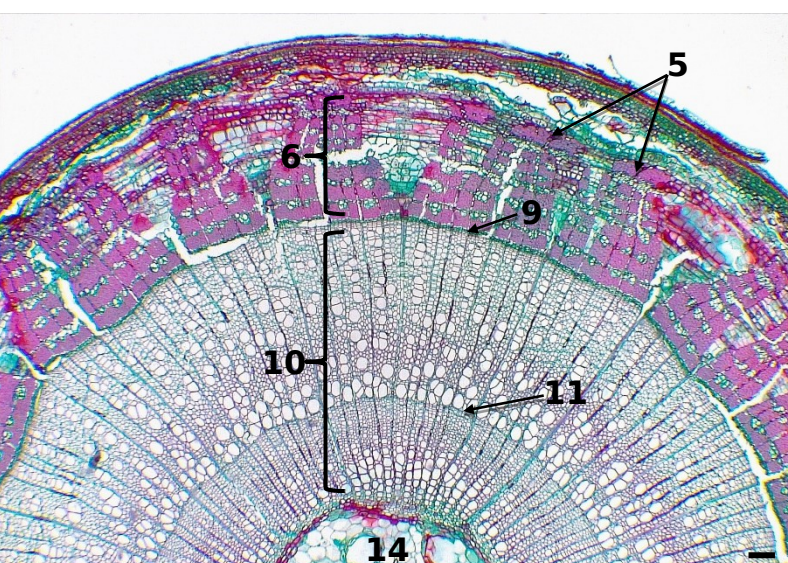
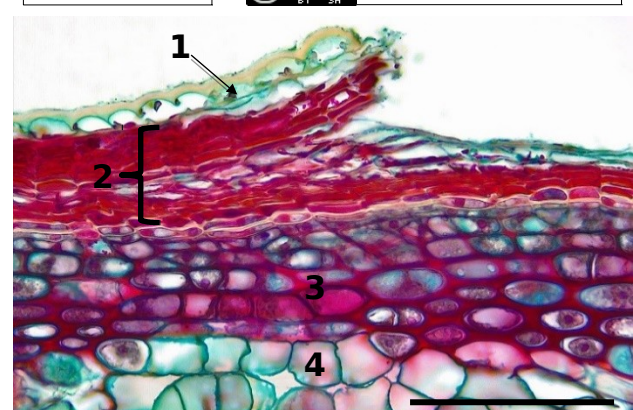


1. Epidermis
2. Periderm
3. Outer cortex
4. Inner cortex
5. Primary phloem region
6. Secondary phloem
7. Secondary phloem fiber
8. Secondary phloem parenchyma
9. Vascular cambium
10. Secondary xylem
11. Annular ring
12. Rays
13. Primary xylem
14. Pith

Transverse sections

Bar = 100 μ m

CC BY SA on Lai and Carol Wenzel. 2020

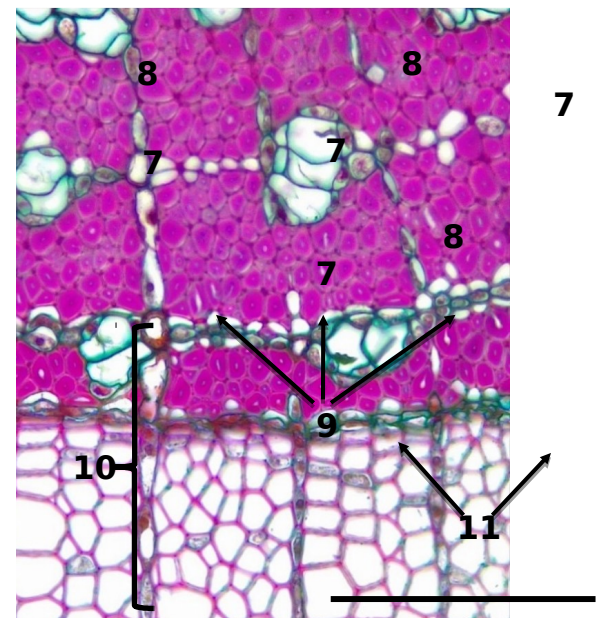
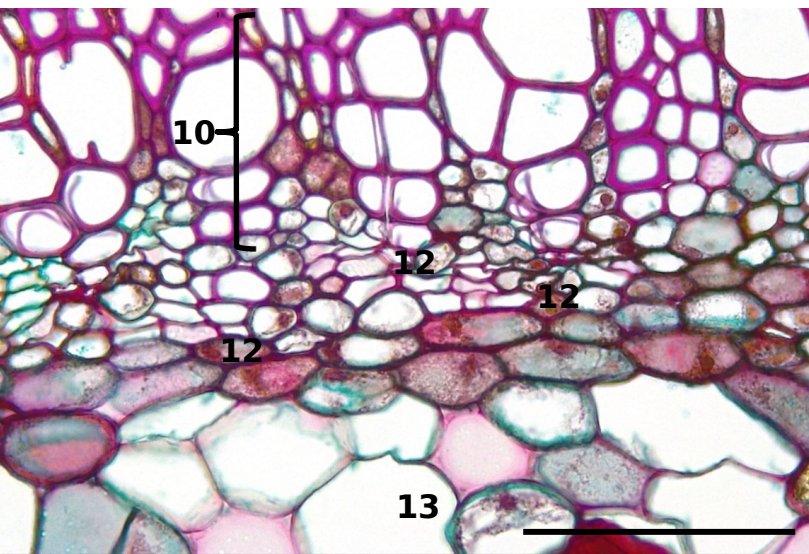
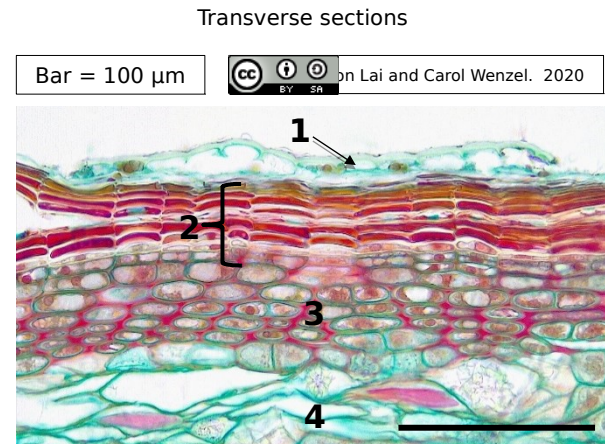
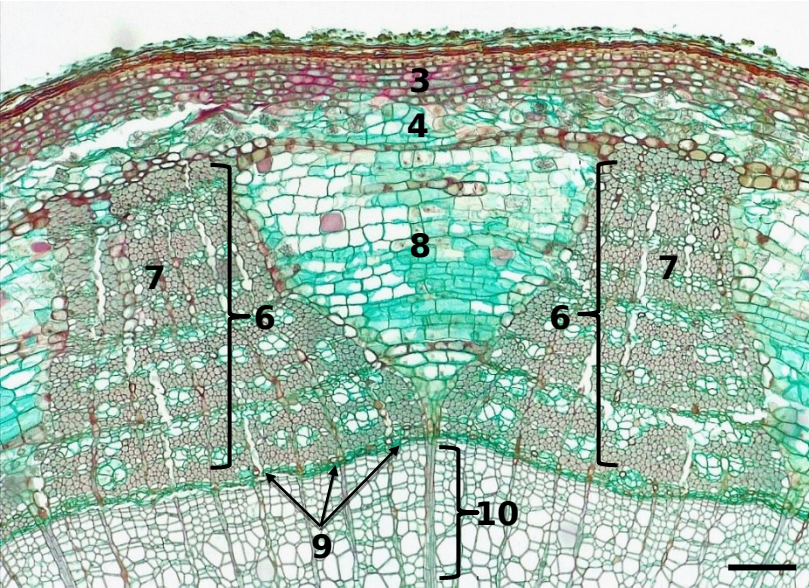
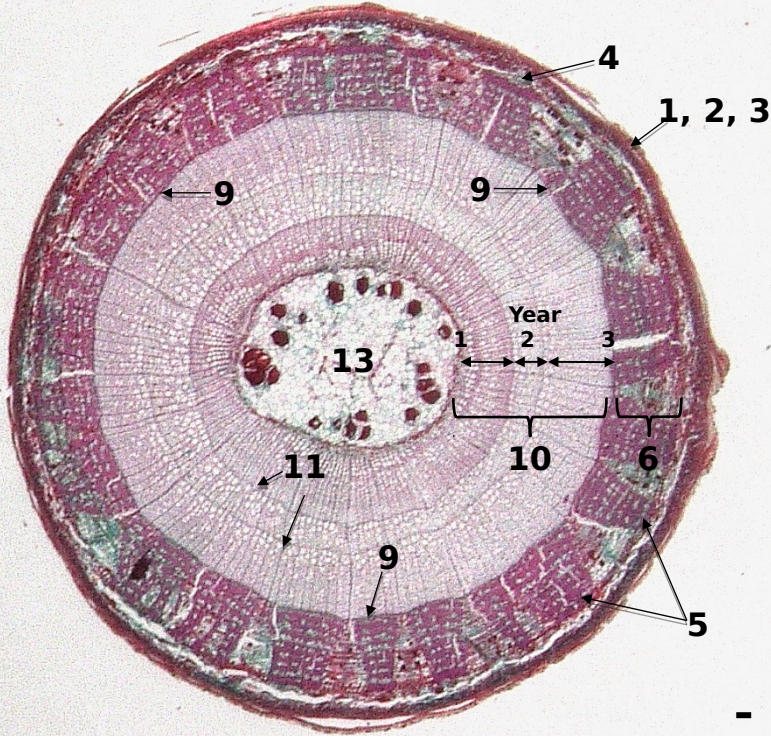


Dicot Stem

Tilia (Basswood)

Year 3

1. Epidermis
2. Periderm
3. Outer cortex
4. Inner cortex
5. Primary phloem region
6. Secondary phloem
7. Secondary phloem fiber
8. Secondary phloem parenchyma
9. Vascular cambium
10. Secondary xylem
11. Rays
12. Primary xylem
13. Pith

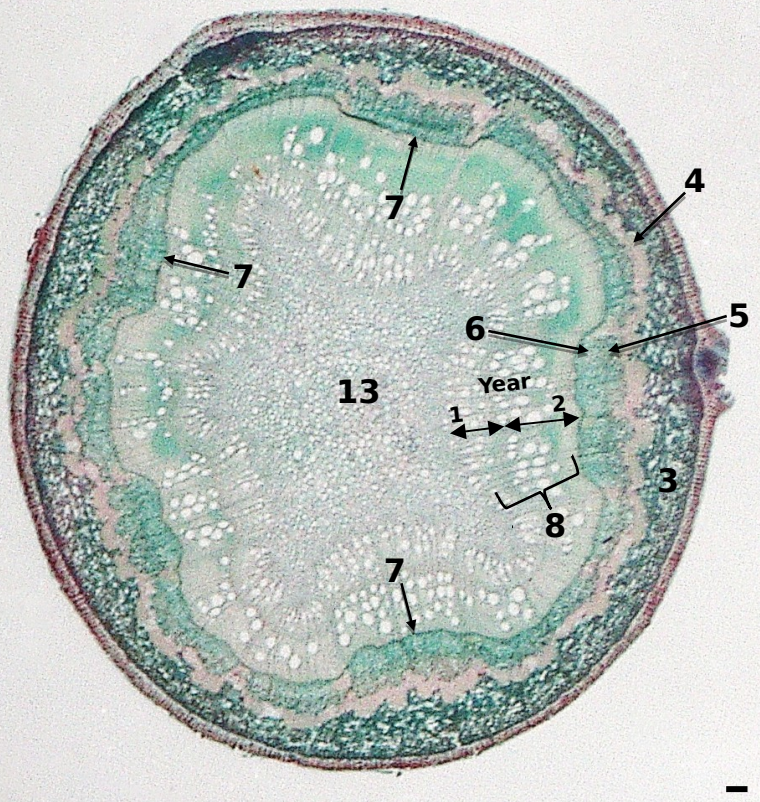


Dicot Stem

Secondary growth

1. Epidermis
2. Periderm
3. Cortex
4. Primary phloem fiber
5. Primary phloem
6. Secondary phloem
7. Vascular cambium
8. Secondary xylem
9. Tracheid
10. Xylem vessel element
11. Rays
12. Primary xylem
13. Pith

Transverse sections



Bar = 100 μ m

on Lai and Carol Wenzel, 2020

