


# Flower Bud

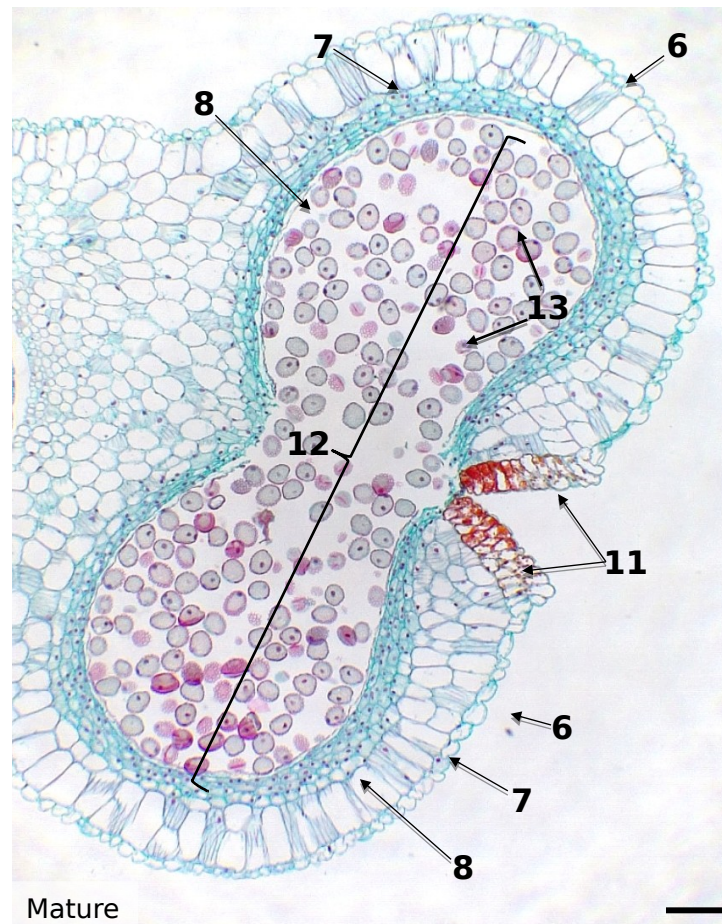
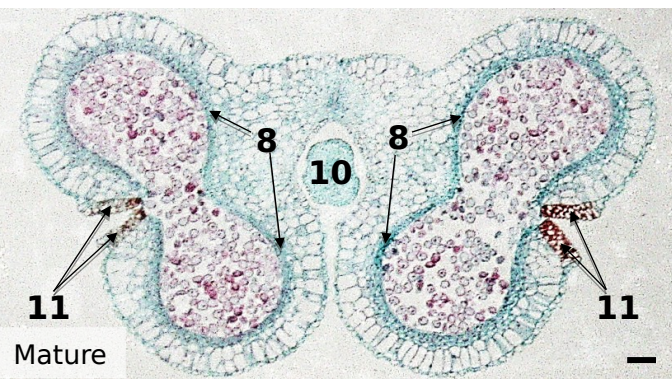
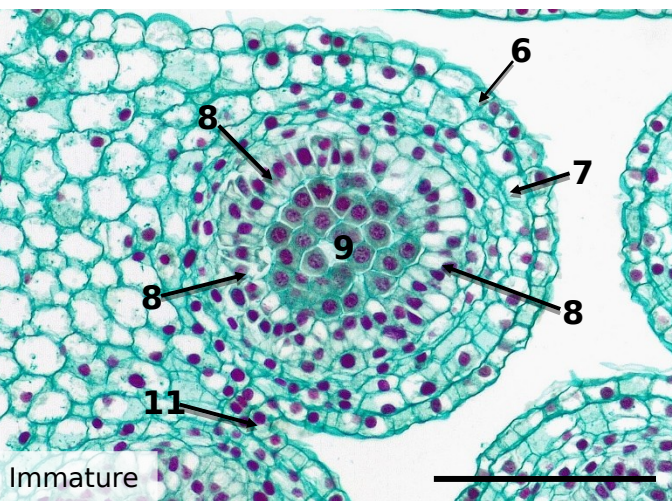
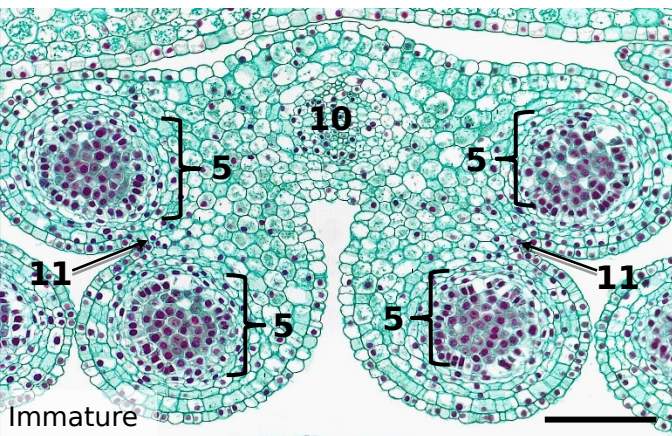
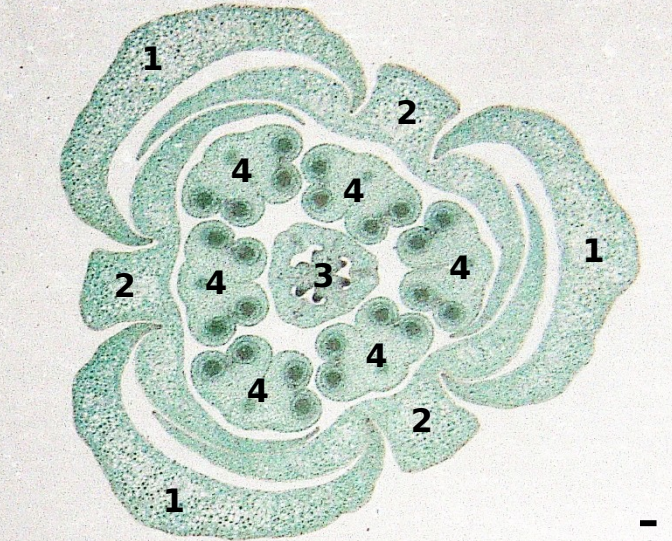
## *Lilium* (Lily)

1. Sepal
2. Petal
3. Ovary
4. Anther
5. Pollen sac
6. Epidermis
7. Endothecium
8. Tapetum
9. Microsporocyte
10. Filament
11. Stromium
12. Locule
13. Pollen grain

Transverse sections

Bar = 200  $\mu$ m

 on Lai and Carol Wenzel, 2020



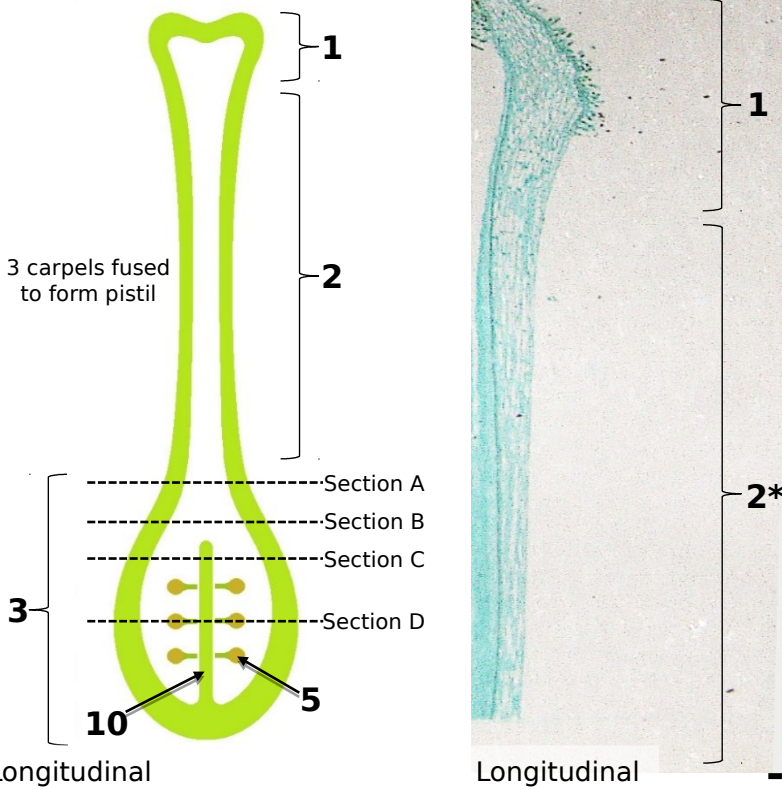


# Flower Pistil

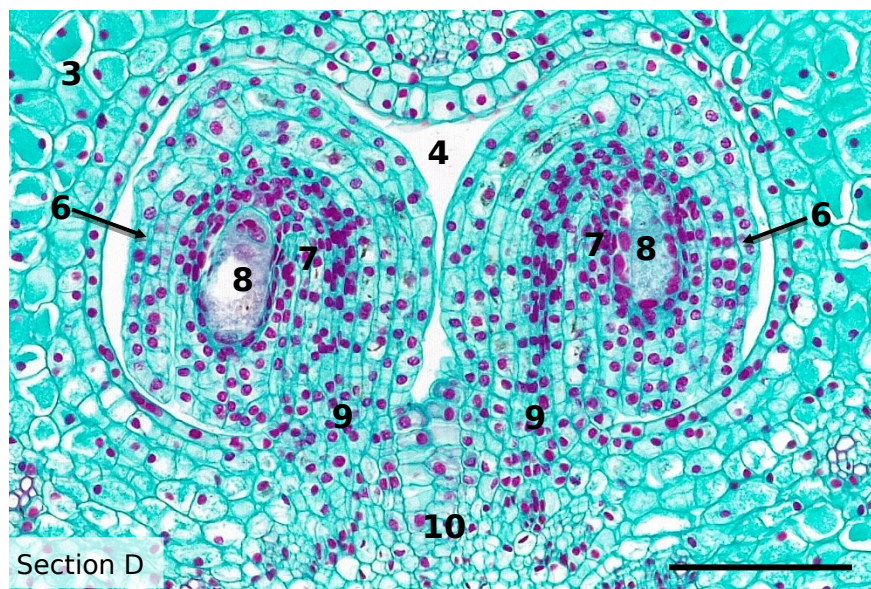
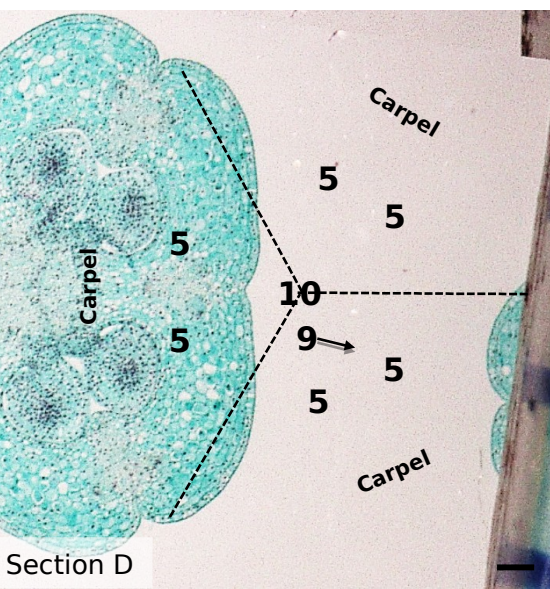
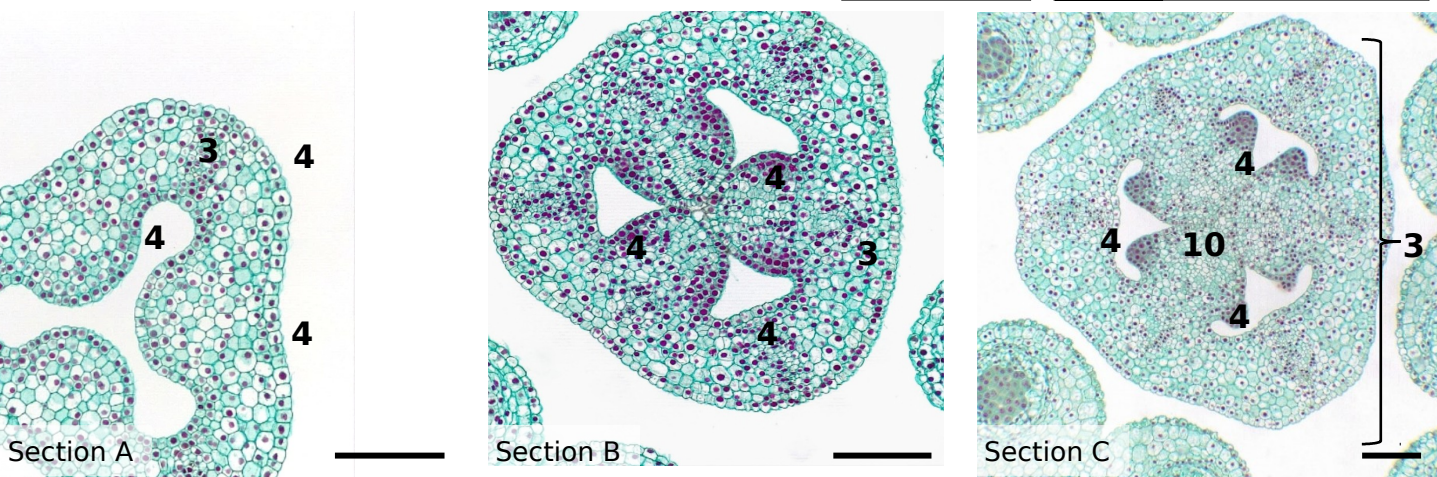
## *Lilium* (Lily)

1. Stigma
2. Style
- 2\*. Style, glancing section
3. Ovary
4. Locule
5. Ovule
6. Ovule integuments
7. Megasporangium (nucellus)
8. Megasporocyte
9. Funiculus
10. Septum

Transverse sections unless otherwise stated



Bar = 200 μm on Lai and Carol Wenzel. 2020





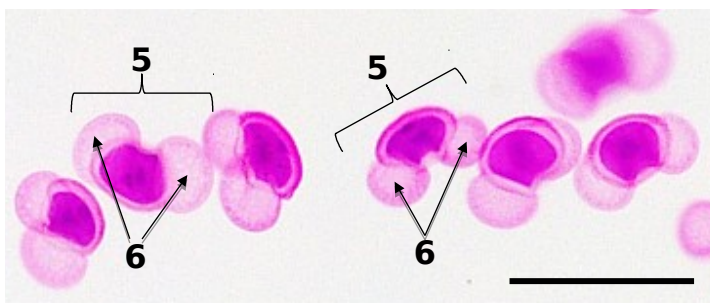
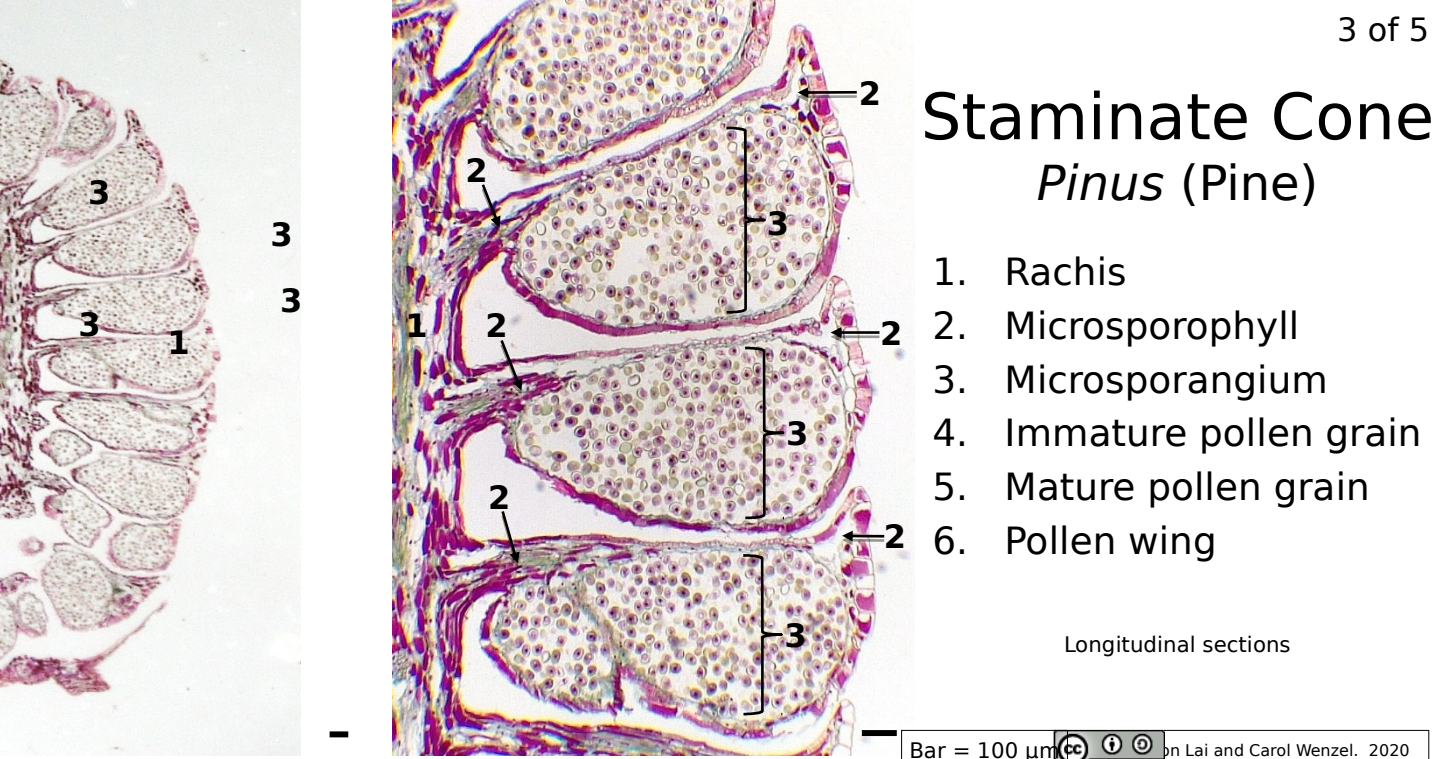
# Staminate Cone

## *Pinus* (Pine)

1. Rachis
2. Microsporophyll
3. Microsporangium
4. Immature pollen grain
5. Mature pollen grain
6. Pollen wing

Longitudinal sections

Bar = 100  $\mu$ m  on Lai and Carol Wenzel. 2020





# Ovulate Cone

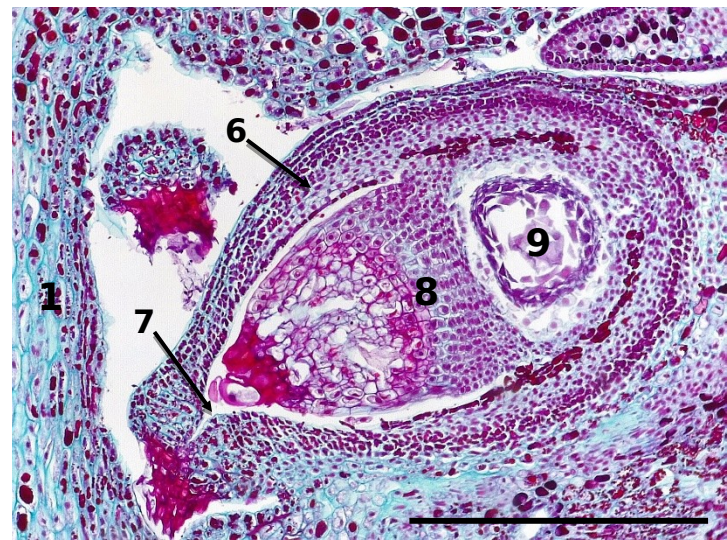
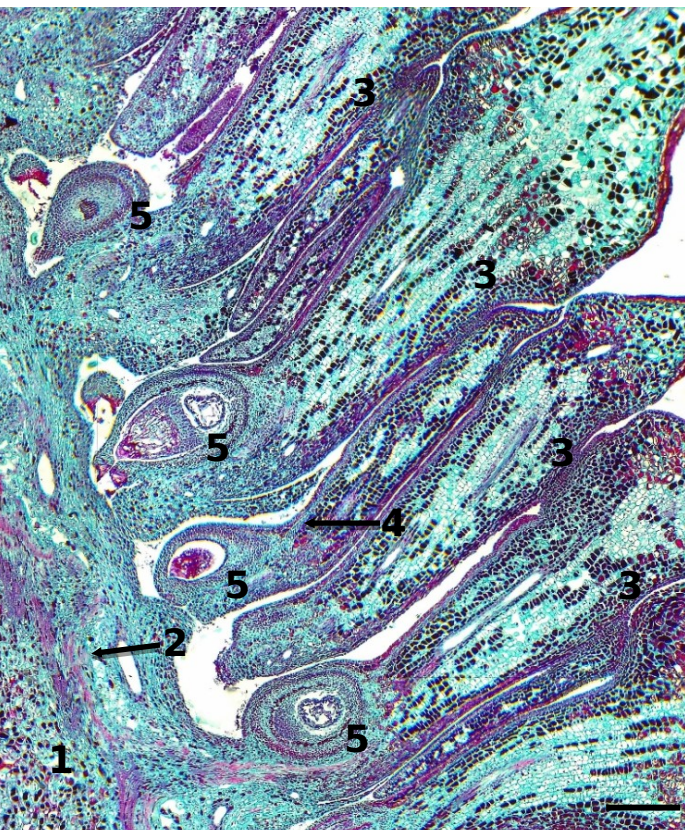
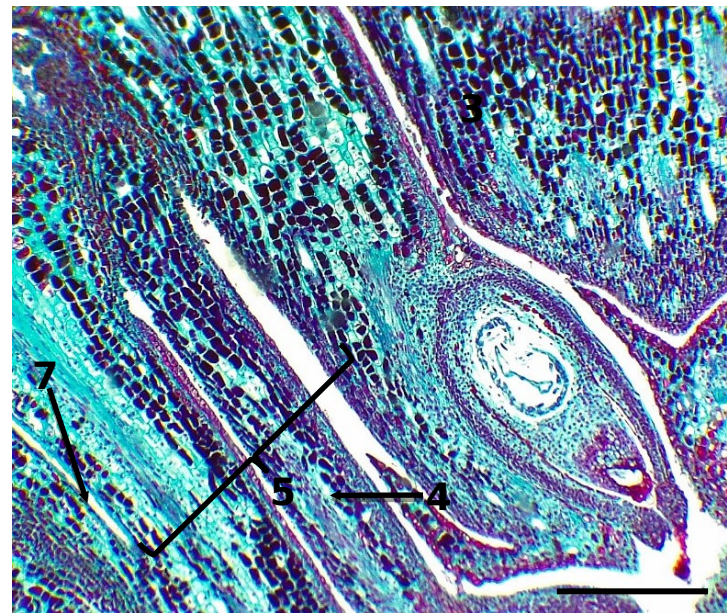
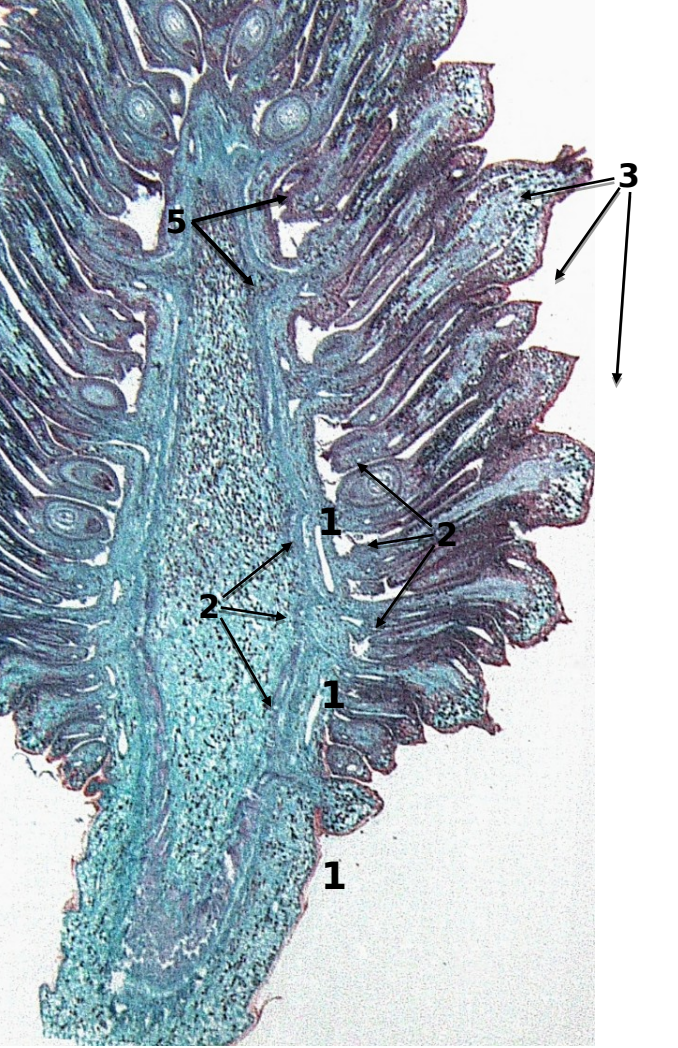
## *Pinus* (Pine)

1. Rachis
2. Vascular strands
3. Ovuliferous scale
4. Bract scale
5. Ovule
6. Ovule integuments
7. Micropyle
8. Megasporangium (nucellus)
9. Megasporocyte

Longitudinal sections

Bar = 500  $\mu$ m

CC BY SA on Lai and Carol Wenzel. 2020

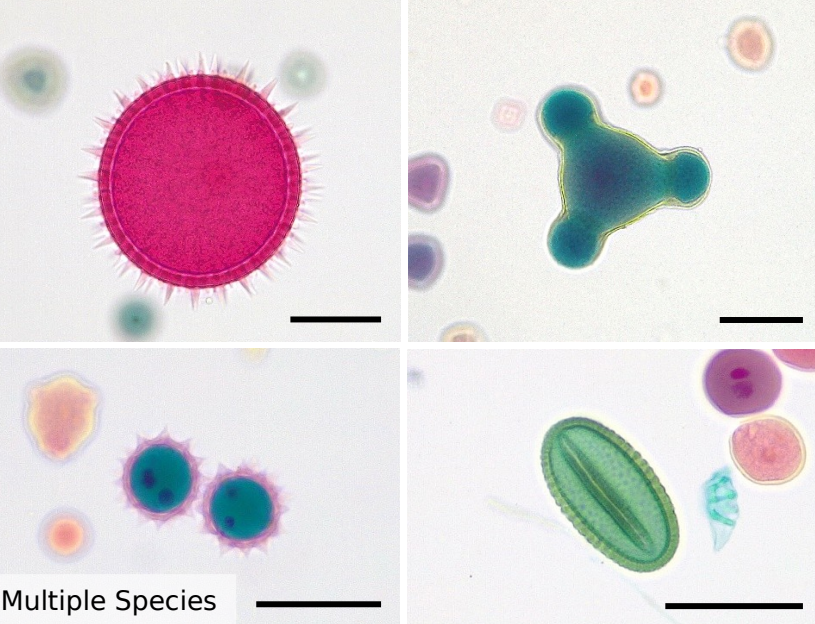




# Pollen

1. Mature pollen grain
2. Germinating pollen grain
3. Pollen wing
4. Pollen tube
5. Tube nucleus
6. Generative nucleus
7. Stigma
8. Papilla

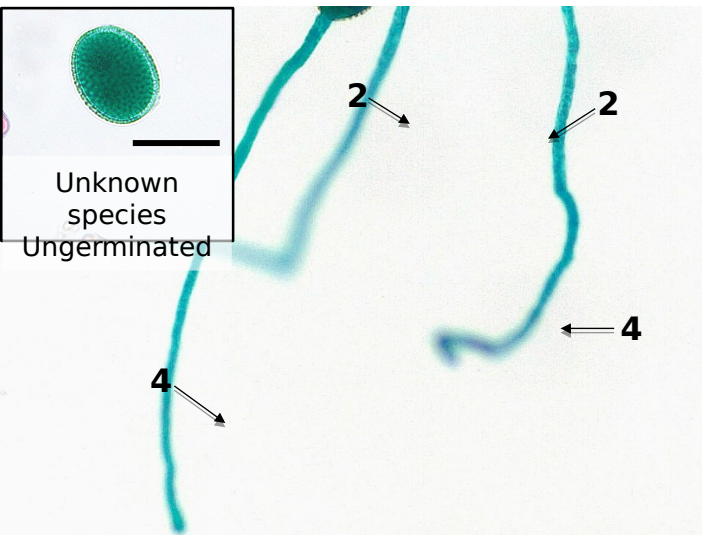
Whole mounts  
unless otherwise stated



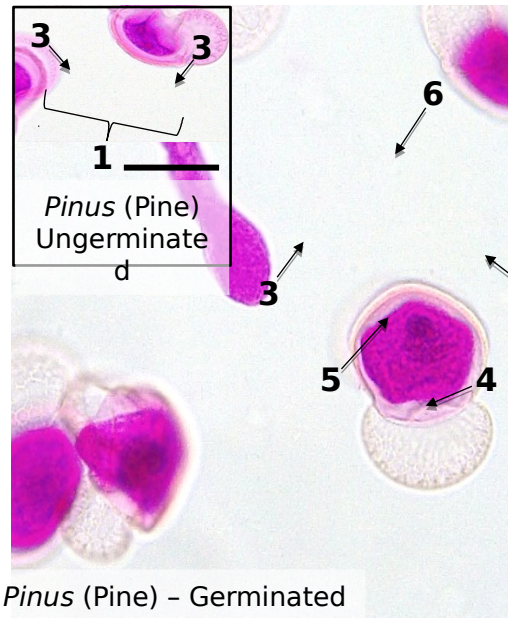
Multiple Species

Bar = 50 μm

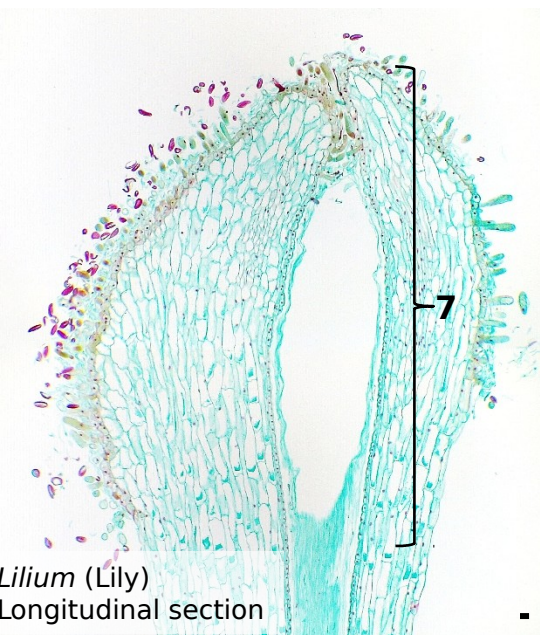
CC BY SA on Lai and Carol Wenzel. 2020



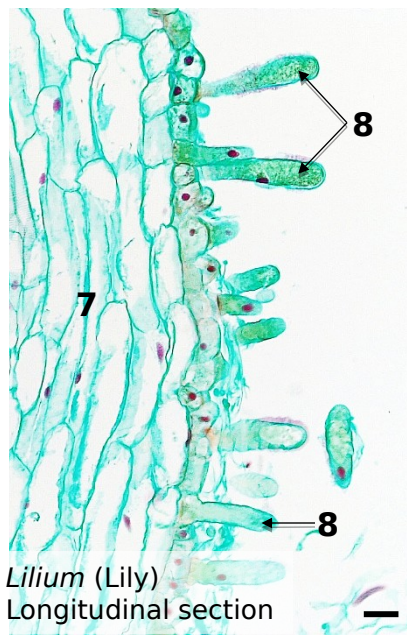
Unknown species - Germinated



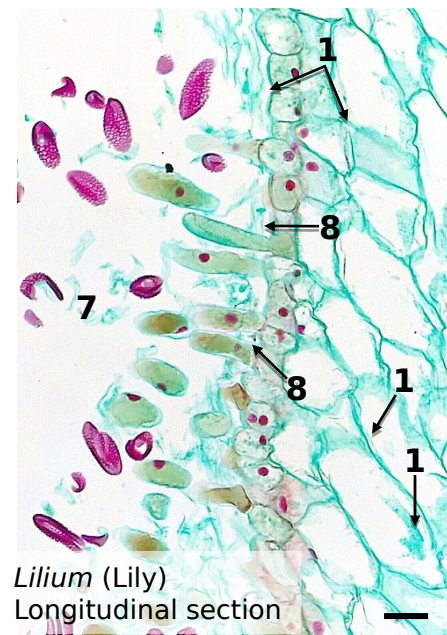
*Pinus* (Pine) - Germinated



*Lilium* (Lily)  
Longitudinal section



*Lilium* (Lily)  
Longitudinal section



*Lilium* (Lily)  
Longitudinal section