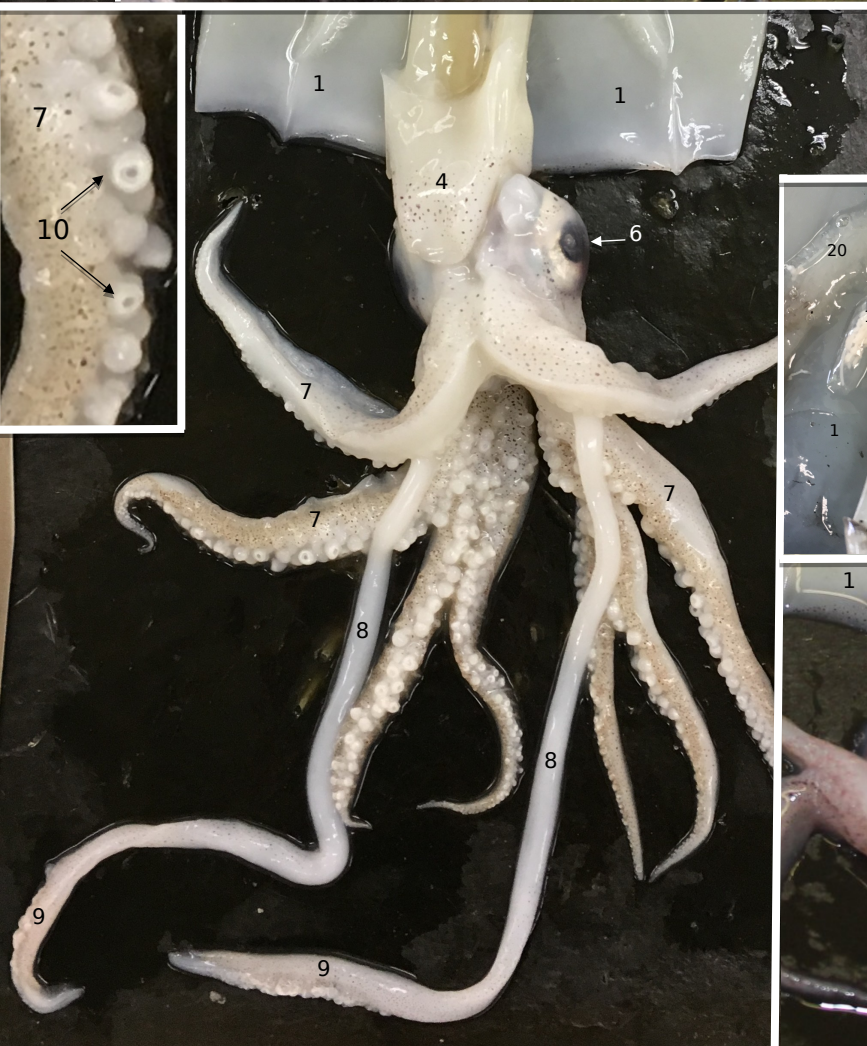


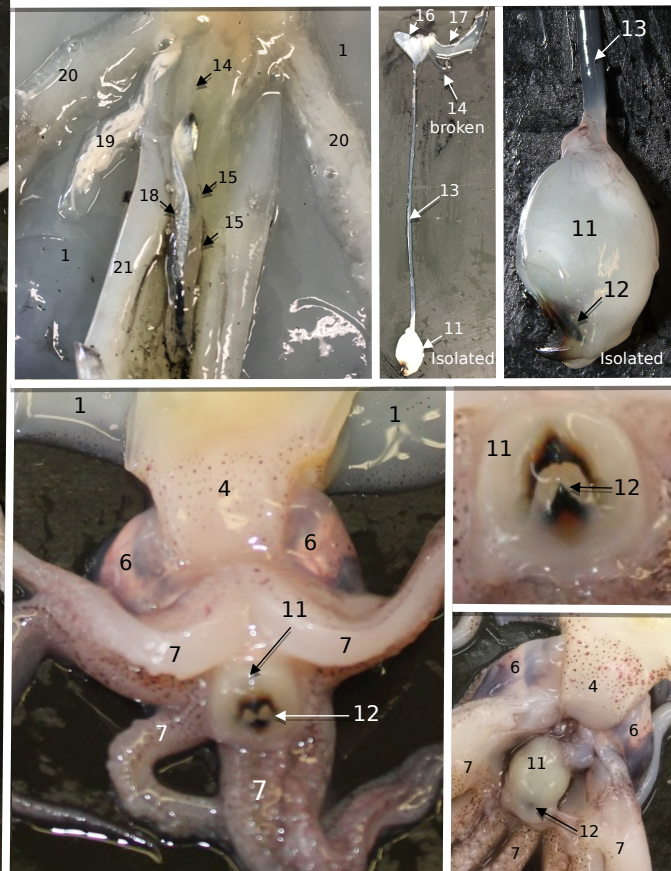
Squid

Family Loliginidae

1. Mantle
2. Fin
3. Chromatophores
4. Siphon/ funnel
5. Pen
6. Eye
7. Arm
8. Tentacle
9. Club
10. Suckers
11. Buccal mass
12. Mouth and beak
13. Esophagus
14. Intestine
15. Rectum
16. Stomach
17. Cecum
18. Ink sac
19. Penis
20. Gills
21. Siphon retractor muscles



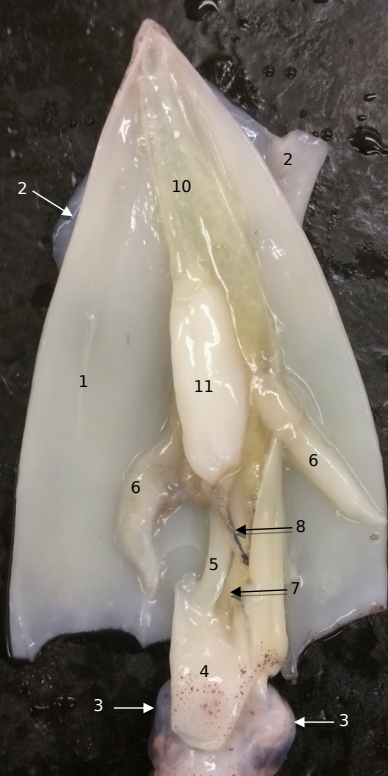
CC BY SA a Cornish and Carol Wenzel. 2019



Female Squid

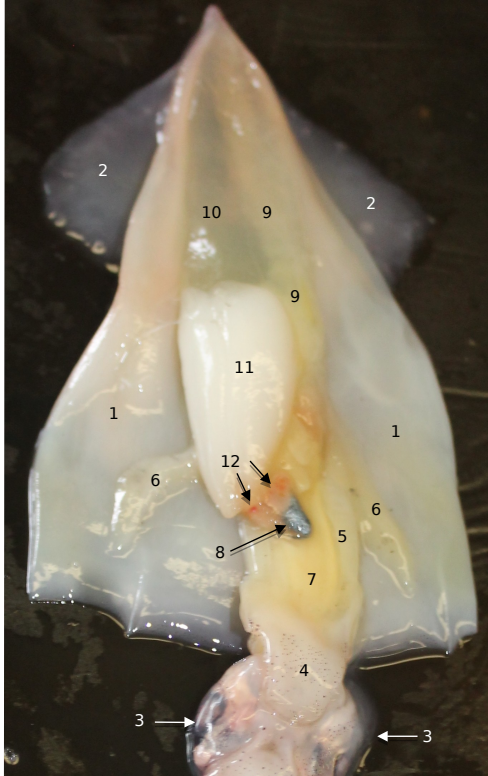
Family Loliginidae

1. Mantle
2. Fin
3. Eye
4. Siphon/ funnel
5. Siphon retractor muscles
6. Gills
7. Liver
8. Ink sac
9. Cecum
10. Ovary
11. Nidamental glands
12. Accessory nidamental gland
13. Oviducal gland
14. Egg



Immature

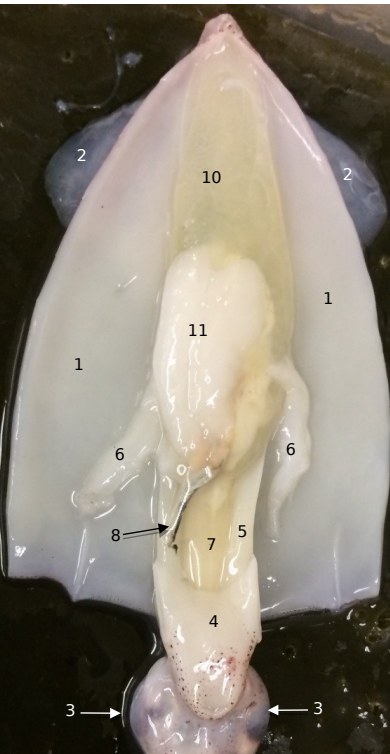
Nidamental gland and ovary still developing.
Cecum is empty.



More mature

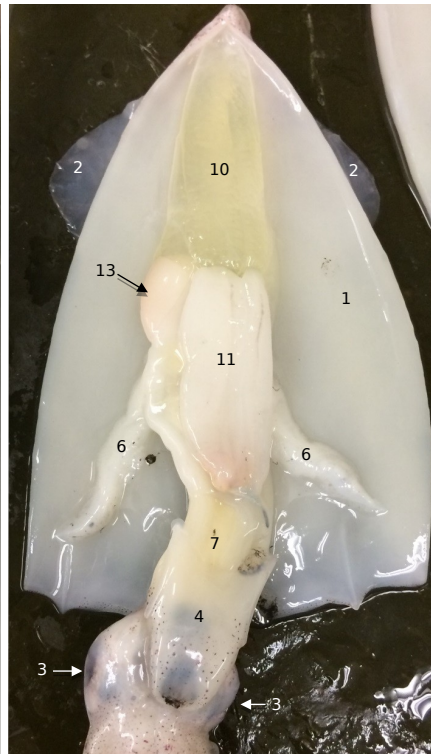
Larger nidamental gland and ovary.
Cecum is full.

a Cornish and Carol Wenzel. 2019



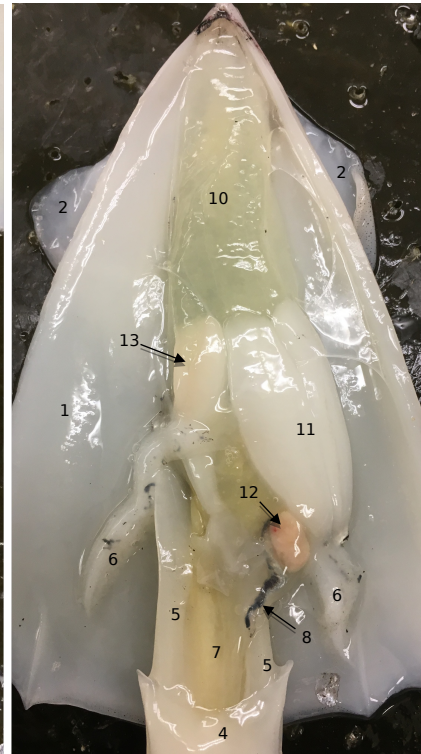
Mature

Ovary is covering cecum.



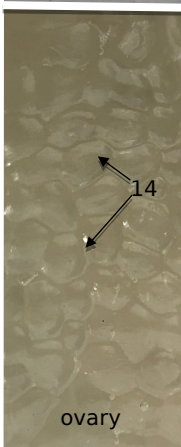
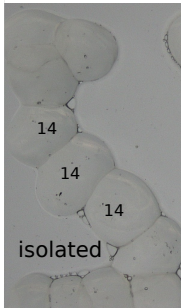
Mature

Ovary is covering cecum.
Oviducal gland is visible.



Mature

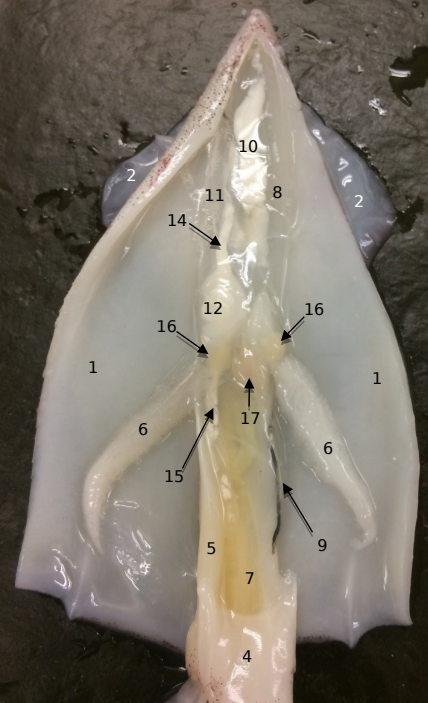
Ovary is covering cecum.
Nidamental gland displaced to the side.



Mature
Ovary and eggs

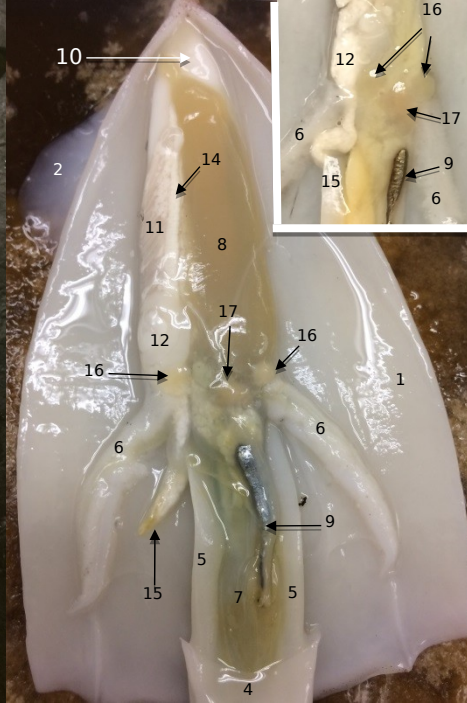
Male Squid Family Loliginidae

1. Mantle
2. Fin
3. Eye
4. Siphon/ funnel
5. Siphon retractor muscles
6. Gills
7. Liver
8. Cecum
9. Ink sac
10. Testis
11. Spermatophoric sac
12. Spermatophoric organ
13. Spermatophore
14. Vas deferens
15. Penis
16. Branchial heart
17. Systemic heart



Immature

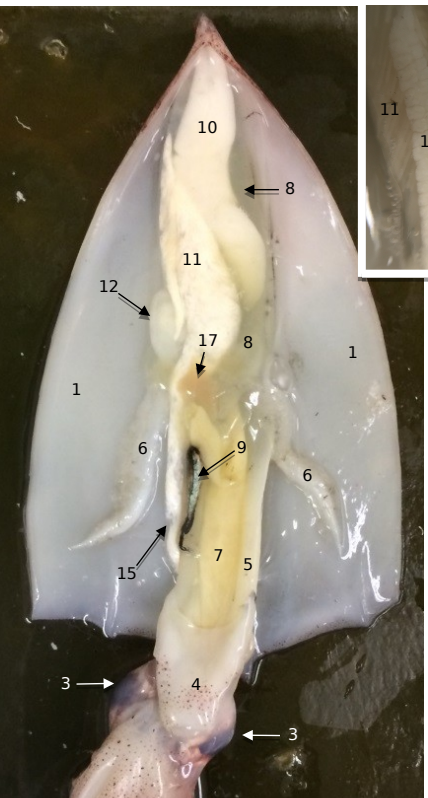
Testis and spermatophoric complex are not developed.
Cecum is empty.



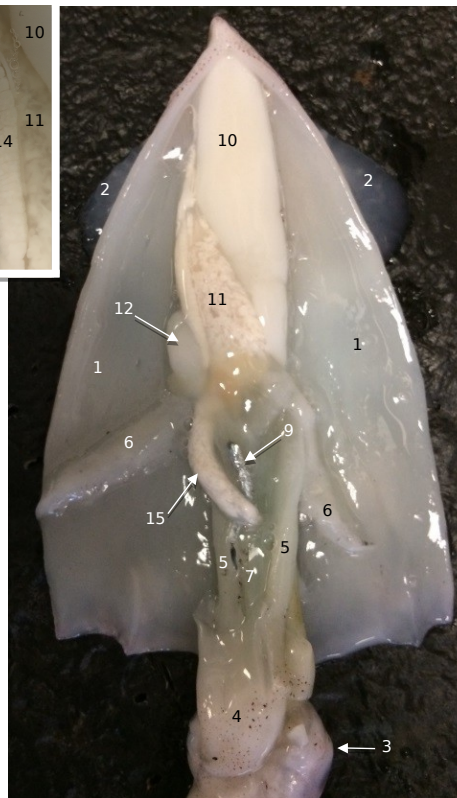
More mature

Testis is mostly covered by full cecum.
Spermatophoric complex more developed.

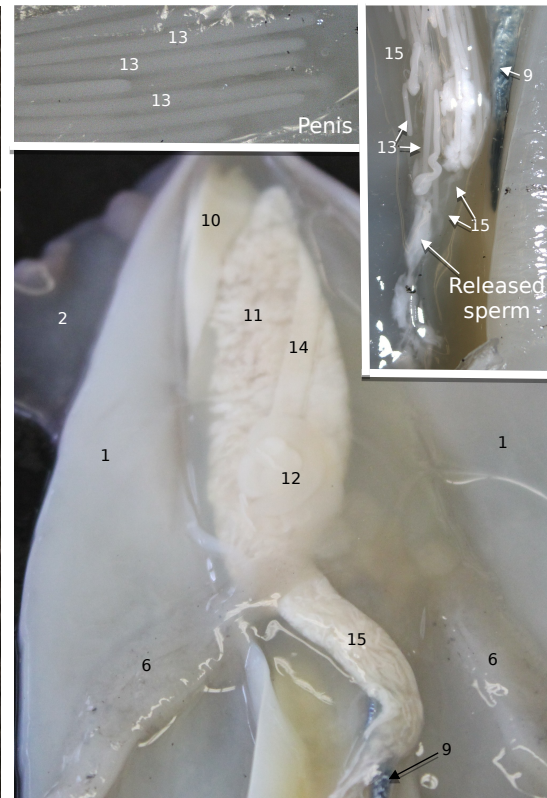
a Cornish and Carol Wenzel. 2019



Mature



Mature



Most mature

Testis is covering most/all of cecum.
Spermatophoric sac and penis are filled with spermatophores.