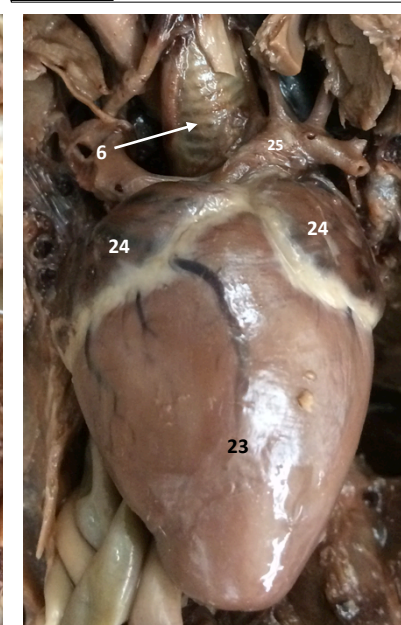
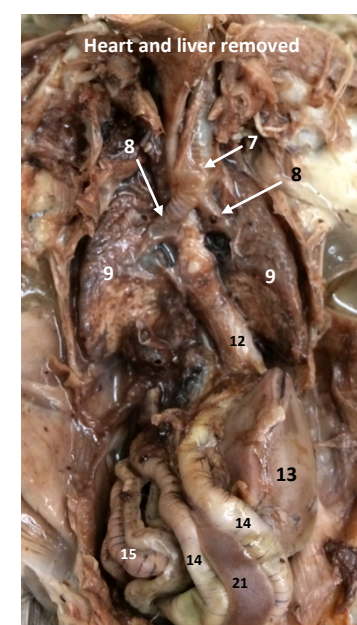
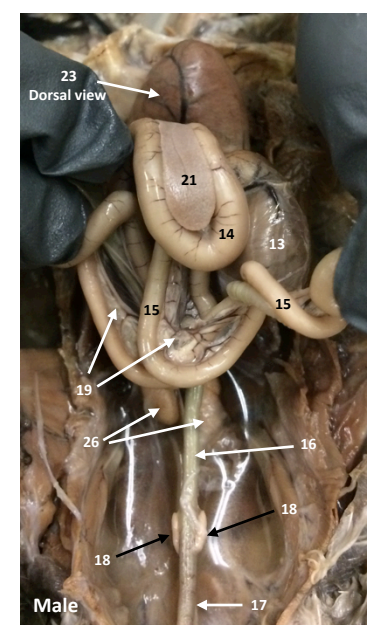
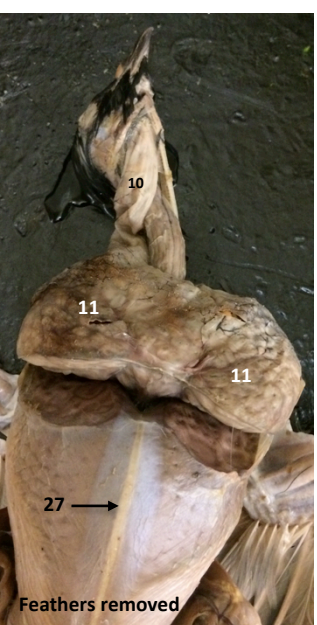
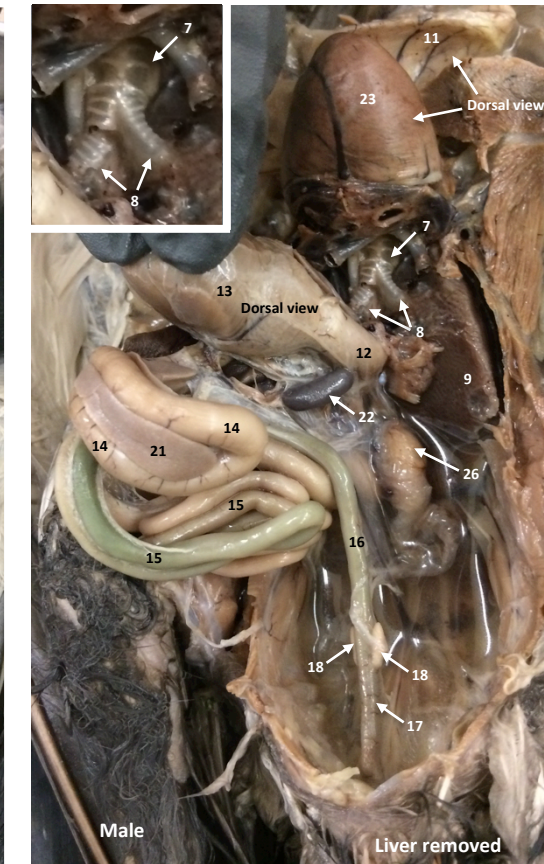
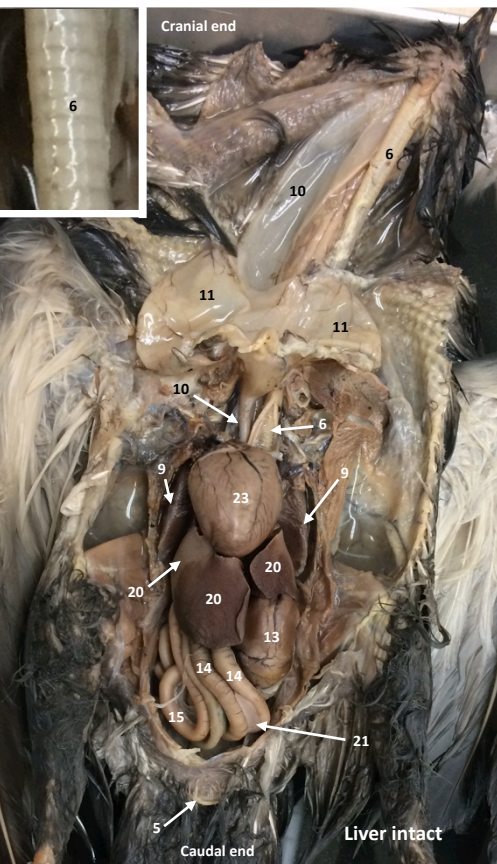
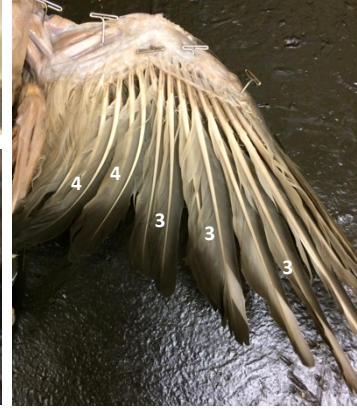
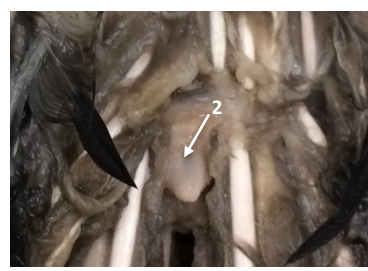


Pigeon

Columba livia

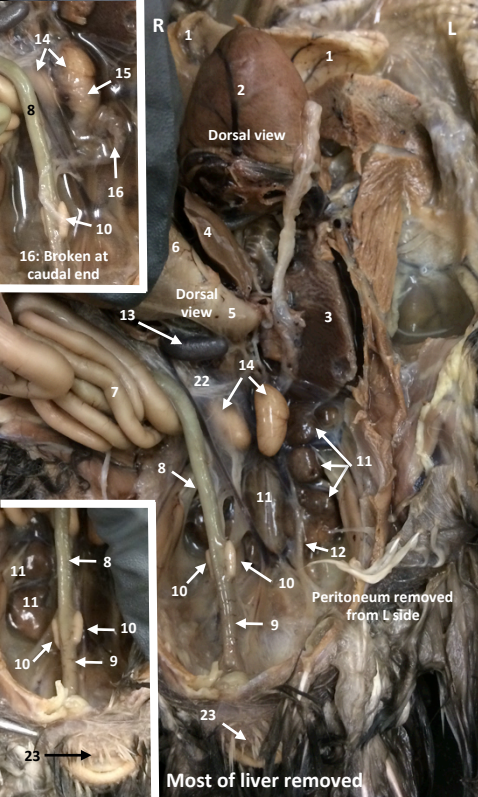
1. Cere
2. Uropegeal gland
3. Primary feather
4. Secondary feathers
5. Cloaca
6. Tracheal tube
7. Syrinx
8. Bronchus
9. Lung
10. Esophagus
11. Crop
12. Proventriculus
13. Ventriculus (gizzard)
14. Duodenum
15. Jejunum
16. Ileum
17. Large intestine
18. Colic cecum
19. Mesentery
20. Liver
21. Pancreas
22. Spleen
23. Heart – ventricle
24. Heart – atrium
25. Aortic arch
26. Testis
27. Keel of sternum



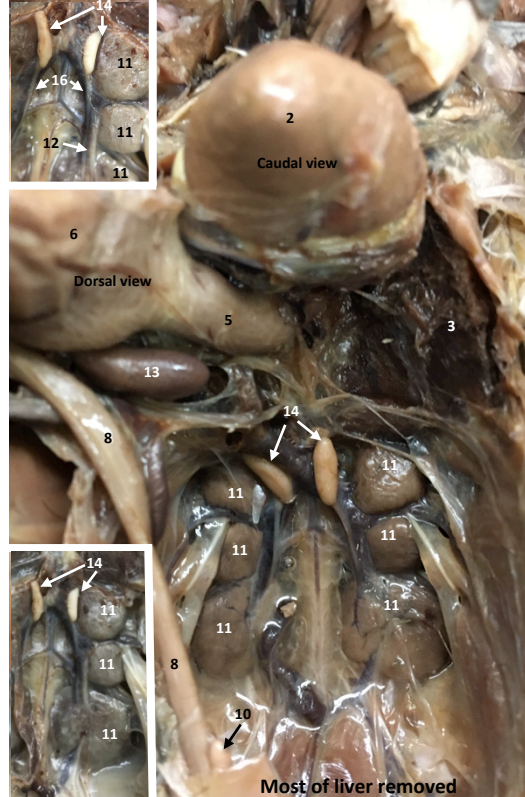
Pigeon

Columba livia

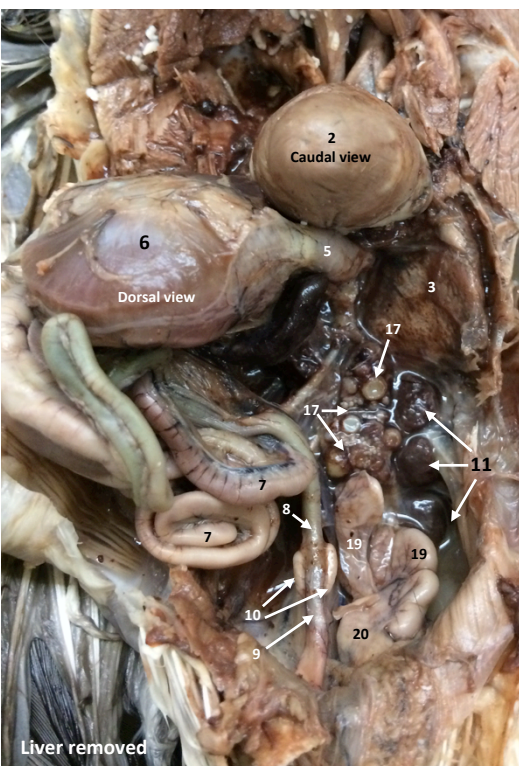
1. Crop
2. Heart – ventricle
3. Lung
4. Liver
5. Proventriculus
6. Ventriculus (gizzard)
7. Jejunum
8. Ileum
9. Large intestine
10. Colic cecum
11. Kidney
12. Ureter
13. Spleen
14. Testis
15. Epididymis
16. Vas deferens
17. Ovary (with eggs)
18. Ostium
19. Oviduct
20. Uterus
21. Developing eggs in oviduct or uterus
22. Peritoneum
23. Cloaca



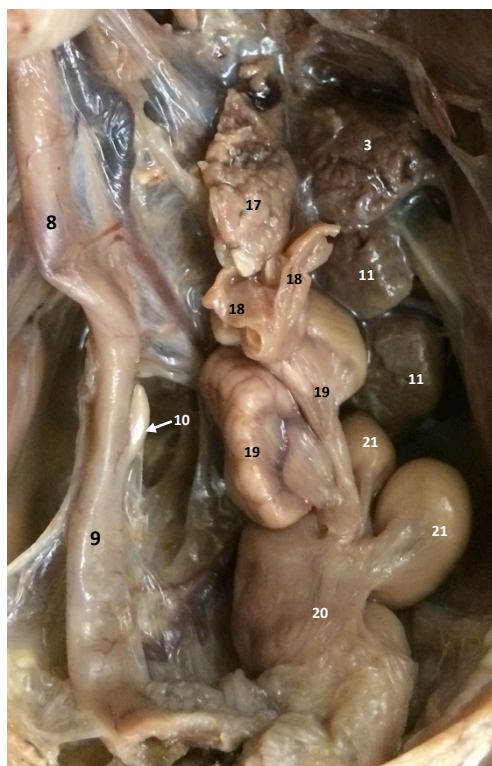
Mature male



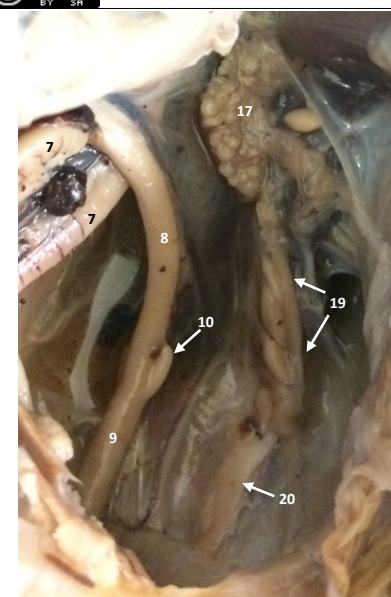
Immature male
Testes are smaller than in mature male.



Mature female
Large follicles in ovaries.
Enlarged oviduct and uterus contains developing eggs.



More mature female
Eggs are larger within the enlarged oviduct and uterus.



Immature female
Oviduct and uterus are not enlarged.

Pigeon

Columba livia

Isolated digestive system

1. Beak
2. Esophagus
3. Crop
4. Proventriculus
5. Ventriculus (gizzard)
6. Duodenum
7. Jejunum
8. Ileum
9. Large intestine
10. Colic cecum
11. Mesentery
12. Liver
13. Pancreas
14. Spleen

