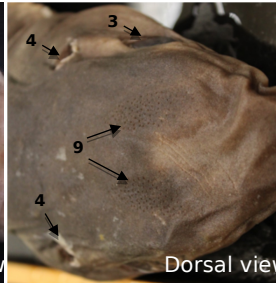
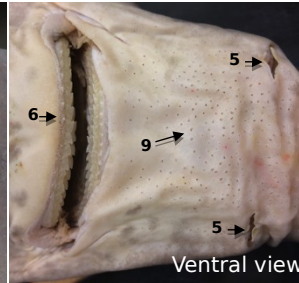
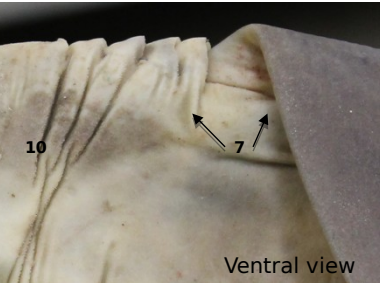
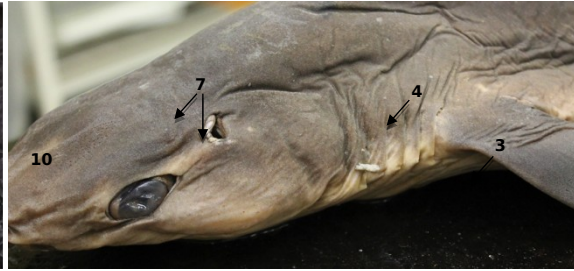
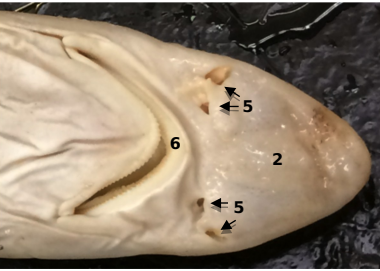
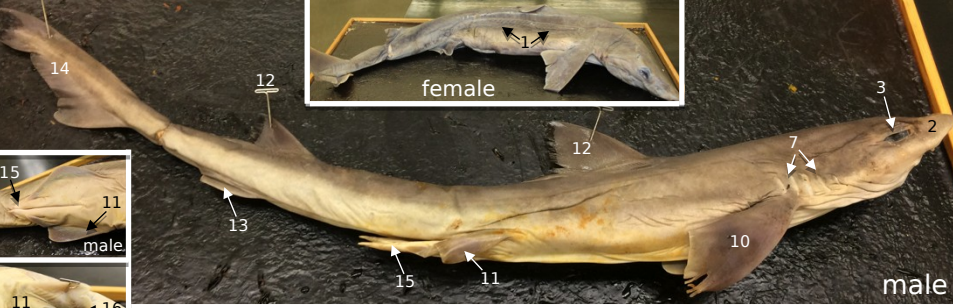


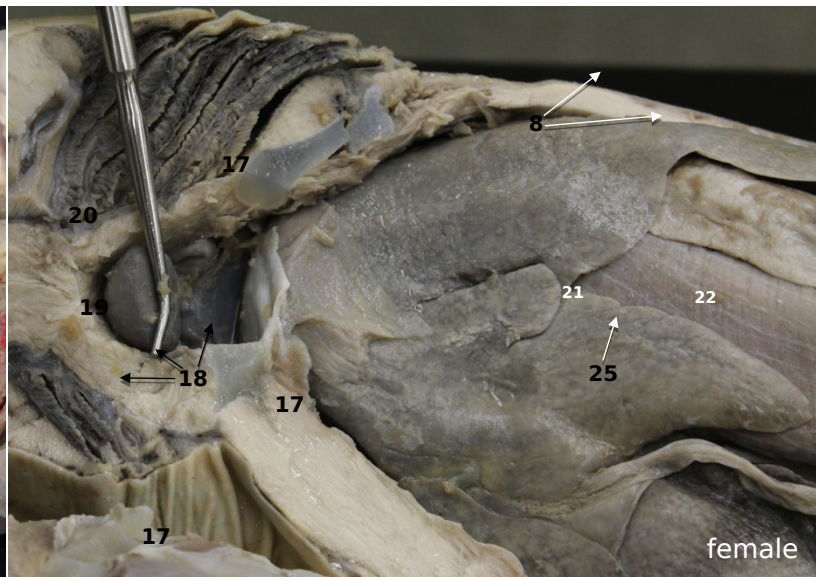
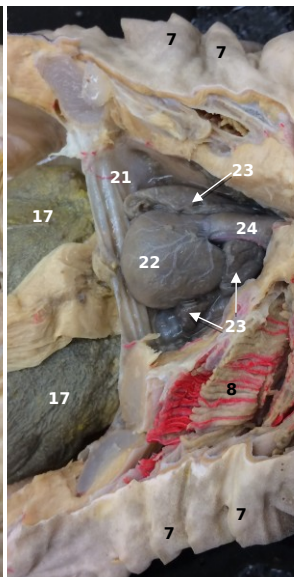
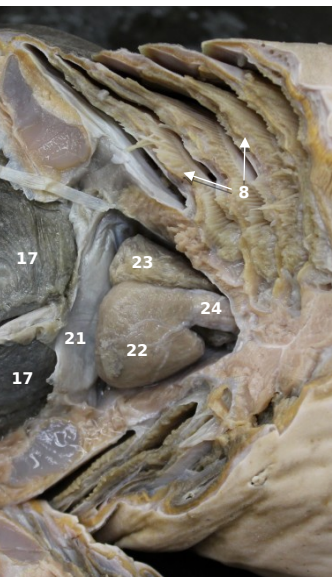
# Spiny dogfish

## *Squalus acanthias*



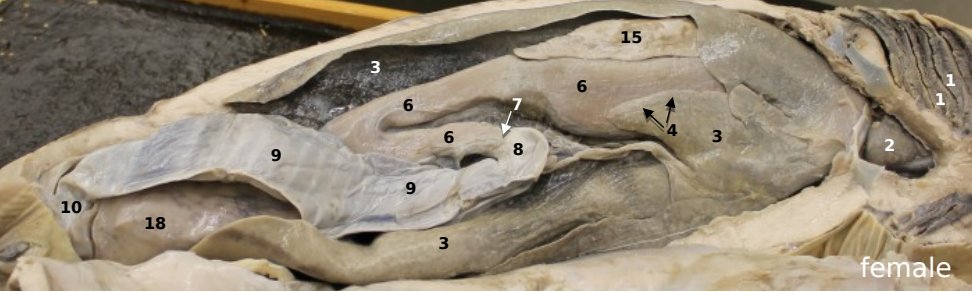
1. Lateral line
2. Rostrum
3. Eye
4. Spiracle
5. Nares
6. Mouth
7. Gill slits
8. Internal gills
9. Ampullae of Lorenzini
10. Pectoral fin
11. Pelvic fin
12. Dorsal fin
13. Anal fin
14. Caudal fin
15. Male claspers
16. Cloaca
17. Liver
18. Gall bladder
19. Stomach
20. Ovary
21. Pericardium
22. Ventricle
23. Atrium
24. Conus arteriosus
25. Sinus venosus

CC BY SA a Cornish and Carol Wenzel. 2019

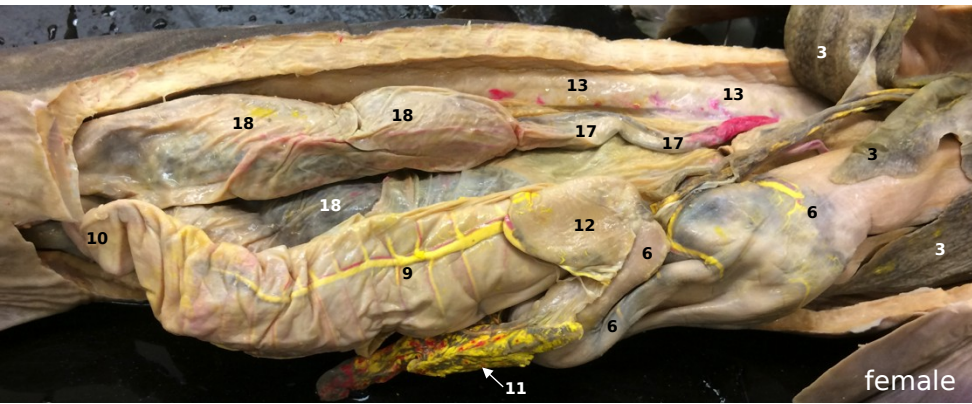




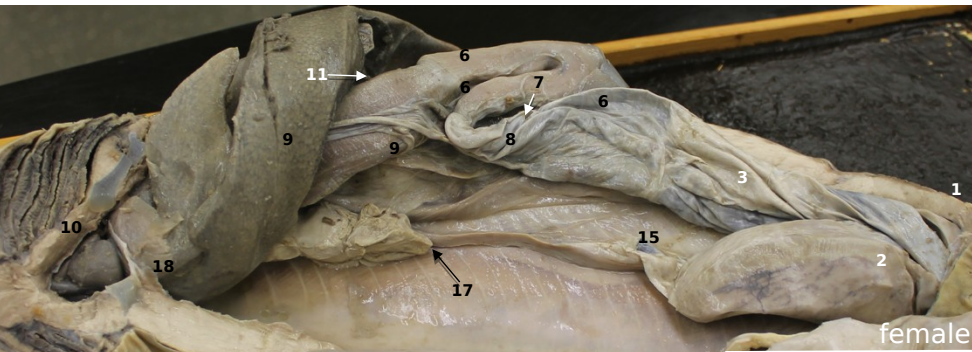
# Spiny dogfish *Squalus acanthias*



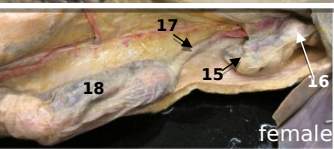
female



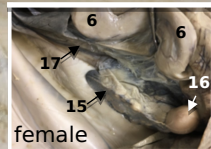
female



female



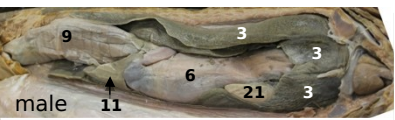
female



female



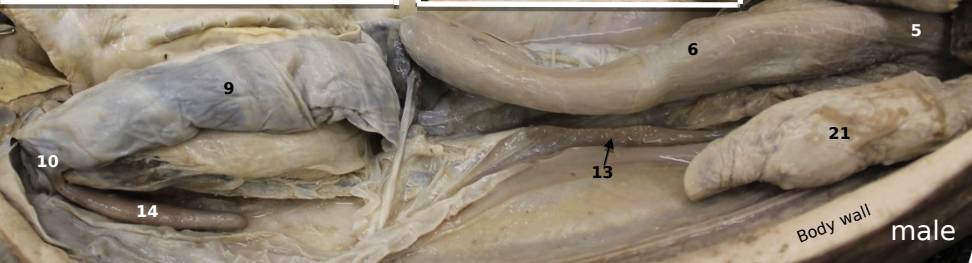
1. Internal gills
2. Heart (general)
3. Liver
4. Gall bladder
5. Esophagus
6. Stomach
7. Pylorus
8. Duodenum
9. Spiral Intestine
10. Colon
11. Spleen
12. Pancreas
13. Kidney
14. Rectal gland
15. Ovary
16. Follicle
17. Oviduct
18. Uterus (containing embryos)
19. Developing embryo
20. Yolk sac
21. Testis
22. Seminal vesicles



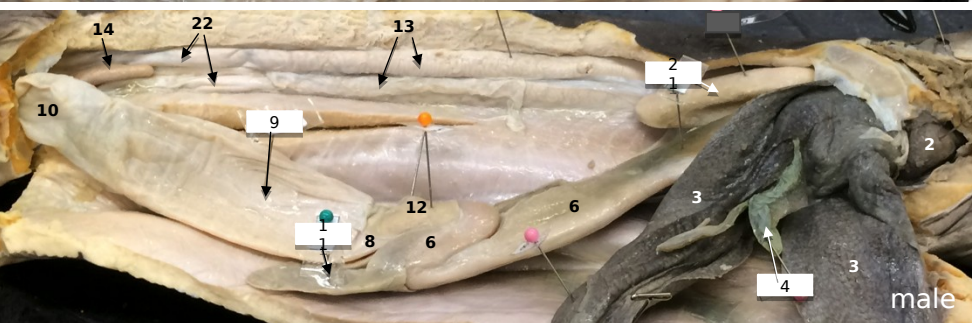
male



immature male



male



male

a Cornish and Carol Wenzel. 2019

